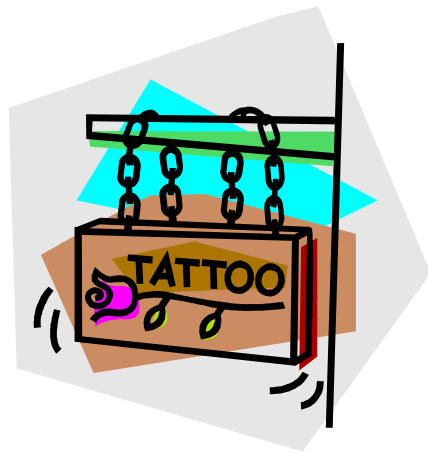


BODY ART FACILITY PLAN CHECK GUIDELINES



GENERAL REVIEW

1. When a tattoo, permanent cosmetic, branding or piercing business is constructed or remodeled, plans and specifications for such construction, remodel or alteration shall be submitted to the Plan Review Unit of the Local Enforcement Agency (LEA). The local building official may require plans as well. California Health & Safety Code (CHSC) § 119312(e), CHSC §119312(h)
 - A. Scaled drawing shall include a floor plan indicating the layout of procedure areas, cleaning and sterilization area, sink counters, storage areas, equipment and reception areas shall be submitted for review. See attached example floor plan
 - B. Plan submissions shall include a finish schedule for sanitary walls, floors and ceiling as approved by the LEA. See attached example finish schedule
 - C. All construction is to be done in accordance with approved plans. Approval by the LEA and all applicable permits must be obtained before commencing work.

FACILITY CONSTRUCTION

1. General Premises
 - A. Floors in the work areas and restroom shall be constructed of materials that are smooth, nonabsorbent, free of open holes and washable. CHSC §119314(a)(2)
 - B. The walls in work areas shall be smooth, free of open holes and washable. CHSC §119314(a)(2)
 - C. The premises shall be constructed and maintained to be free from insect or rodent infestation. CHSC §119314(a)(3)
 - D. The facility must have adequate toilet facilities that meet the specifications of the State Building Standards Code, local building standard codes and any other local ordinance. The sink shall be supplied with hot and cold running water, containerized liquid soap, and single-use paper towels that are dispensed from a wall-mounted, touchless dispenser. All sinks shall be permanently plumbed and meet local building and plumbing codes. CHSC §119314(a)(5), CHSC §119314(a)(5)
 - E. All counter surfaces and service trays shall have a smooth, durable, and nonabsorbent finish. CHSC §119314(b)(6)

- F. Sinks used for hand washing and where there is a mixing valve or combination faucet, the temperature of the water shall be at least 100 degrees Fahrenheit. CHSC §119301(ac)
- G. The size of the facility water heater should allow for 5 gallons per hour for every sink in the facility. For example, if there is one hand sink in the service area for practitioner use, one in the restroom and one in the decontamination area, you would need a 15 gallon water heater.

Note: To figure out the kilowatts or BTU's needed for the water heater you need, please see the charts below. Additionally you will need to know your average incoming water temperature. The tables below assume you are beginning with water of 60 degrees Fahrenheit.

SIZING TABLE FOR GAS WATER HEATERS

Gallons Per Hour Delivery At Indicated Temperature Rise

BTU (X 1000)	60°F
5	8
10	15
15	23
20	30
25	38
30	45
35	53

SIZING TABLE FOR ELECTRIC WATER HEATERS

Gallons Per Hour Delivery At Indicated Temperature Rise

KW	60°F
1	7
2	13
3	20
4	27
5	33
6	40
7	47
8	54
9	60

2. Procedure Areas

- A. The procedure areas must be separated by a wall or ceiling-to-floor partition, from nail and hair activities. Body art can only be performed in the procedure area of the facility and must be separated from all business not related to body art. CHSC §119314(b)(2), CHSC §119314(a)(3)
- B. This area must be equipped with an accessible sink supplied with hot and cold running water, containerized liquid soap, and single-use paper towels

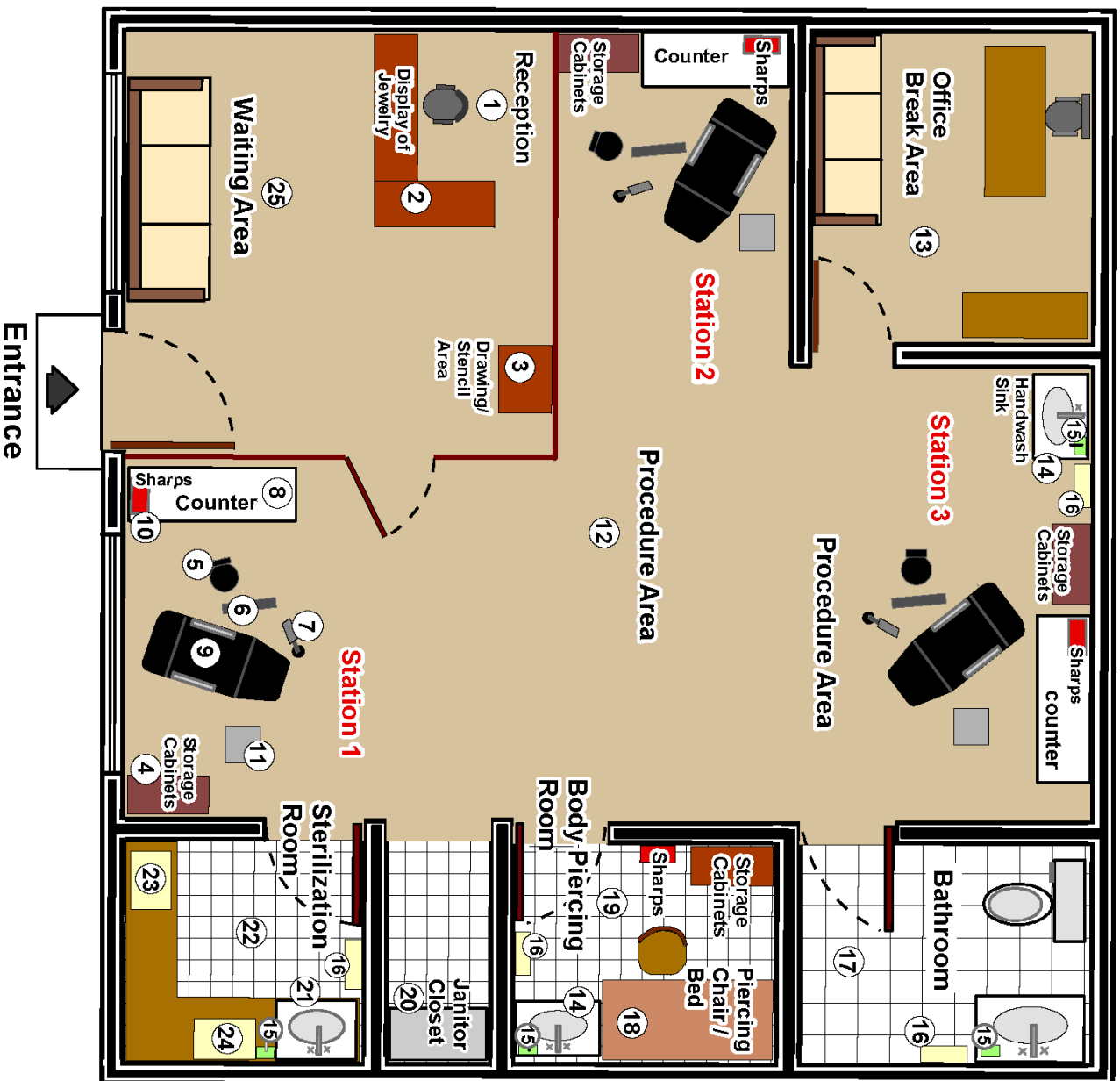
- that are dispensed from a wall-mounted, touchless dispenser that is accessible to the practitioner. All sinks shall be permanently plumbed and meet local building and plumbing codes. CHSC §119314(b)(4), CHSC §119314(b)(5),
- C. The procedure area must be equipped with a light source that provides adequate light for procedures. CHSC §119314(b)(1)
 - D. Lined waste containers shall be available in the procedure area. CHSC §119314(d)
 - E. A sealable, rigid and puncture resistant 'sharps container' must be provided in each procedure area for the disposal of single-use sharp objects that come in contact with blood and/or body fluids that is labeled with the words "Sharps Waste" or the international biohazard symbol and the word "BIOHAZARD". CHSC §119301(x), CHSC §119314(e) & (e)(2)
A sharps container shall either be portable or be installed at an appropriate height to ensure that it is within arm's reach of the practitioner. CHSC 119314(e)(1)
3. Decontamination and sterilization areas:
- A. Unless all equipment and supplies used in the course of a body art procedure are single-use, purchased as pre-packaged and pre-sterilized, the body art facility shall have a decontamination room or area for cleaning instruments and equipment. §119315(f)
 - 1) The decontamination and sanitization area must be separated from the procedure area by a space of at least five feet or by a cleanable barrier. CHSC §119314(c)(1)
 - 2) This area must be equipped with a sink, hot and cold running water, containerized liquid soap in a wall-mounted dispenser, and single-use paper towels dispensed from a wall-mounted, touchless dispenser that is readily accessible to the practitioner. All sinks shall be permanently plumbed and meet local building and plumbing codes. CHSC §119314(c)(2), CHSC §119314(b)(5),
 - 3) This area must be equipped with an approved steam autoclave. Chemical and dry heat sterilizers are not accepted. CHSC §119315(b)(1), 119309(e)

OPERATION

- 1. Documents, including the Infection Prevention and Control Plan (IPCP), or any record, file, paper, process, invoice, or receipt for the purpose of determining compliance shall be available and maintained on-site. CHSC §119313(a)
 - A. The IPCP shall be reviewed and approved prior to final approval to operate. CHSC §119313(d)1

2. Pets or other animals shall not be permitted in the procedure area of the business, except for trained service dogs for disabled clients or practitioners. CHSC §119314(f)
3. No food, drink, tobacco product or personal effects shall be permitted in the procedure or decontamination and cleaning area. CHSC §119309(i)
4. Clean instruments and sterilized instrument packs shall be placed in clean, dry, labeled containers or stored in a labeled cabinet that is protected from dust and moisture. CHSC §119315(c)
5. Check with the local city zoning authority for other conditions or restrictions that may apply to the operation of a body arts facility.

Example Site Plan



1	Reception Desk
2	Display Case
3	Drawing / Stencil Area
4	Storage Cabinets *
5	Chair
6	Armrest
7	Lamp
8	Counter *
9	Procedure Area Bed / Chair
10	Sharps Containers
11	Work Station Tray
12	Procedure Area *
13	Office / Break Room
14	Handwash Sink *
15	Liquid Soap *
16	Single - Use Paper Towel Dispenser *
17	Bathroom *
18	Piercing Chair / Bed
19	Body Piercing Room *
20	Janitor Closet
21	Bio Sink *
22	Sterilization Room *
23	Autoclave *
24	Ultrasonic Machine
25	Waiting Room *

* Items containing this asterik are required to be shown on the scaled plans.

Room/Area Materials and Finishes

ROOM OR AREA	FLOOR	WALLS
Example: Restroom	<i>Smooth quarry tile</i>	<i>Gypsum board; smooth; semi-gloss paint Swiss coffee</i>
Restroom		
Procedure Areas		
Decontamination and Sterilization Room		
Body Piercing Room		
Drawing/Stencil Area		
Reception and Waiting Area		

Equipment Information – Part One

ROOM OR AREA	LOCATION	MANUFACTURER	MODEL NUMBER
Example:			
Autoclave			
Ultrasonic Machine			
Permanent Cosmetic Machine			
Water Heater Capacity: gal.			

Note: Please provide specification sheets for all equipment.

Equipment Information – Part Two

ROOM OR AREA	DESCRIPTION OF MATERIAL
<i>Example: Restroom</i>	
Practitioner Chair	
Client Chair	
Piercing Table	
Stool	
Arm Rest	
Mayo Trays	
Counters	
Storage Cabinets	
Disposable Instruments	