

# **LASSEN** **COUNTY**



**AUGUST 27, 2019**

**ASSEMBLY DISTRICT 1**

**SPECIAL PRIMARY ELECTION**

Compiled and Distributed by Lassen County Clerk-Recorder



## **SAMPLE BALLOT & VOTER INFORMATION GUIDE**

You may **mail or bring your ballot** to the County Clerk's Office at:

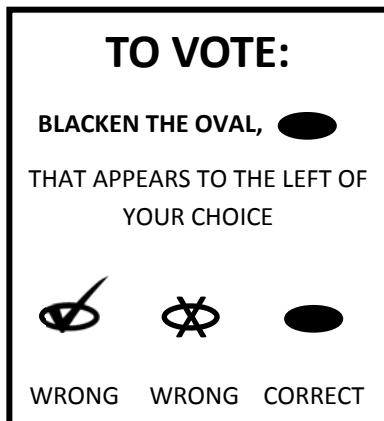
**The Historic Courthouse**

220 S. Lassen Street, Suite 5, Susanville, CA 96130

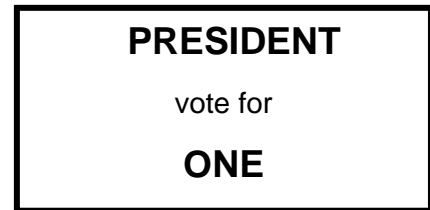
**Drive-up drop box available in the driveway  
behind the Historic Courthouse and Old Jail**







**ELECTION DAY HOURS WILL BE 7 AM—8 PM**

# Using Lassen County's Voting System



E  
X  
A  
M  
P  
L  
E  
S



-  THOMAS A. EDISON
-  ALBERT EINSTEIN
-  HELEN KELLER
-  FLORENCE NIGHTINGALE
-  BOOKER T. WASHINGTON
-  (WRITE IN WOULD GO HERE)

- Use black ink to mark the ballot
- Blacken the oval (●) completely
- Remember to check both sides of the ballot
- Do not vote for more than the number of candidates to be elected for each office
- If you make a mistake in marking your ballot, cross out the incorrect mark and write "ok" next to your correct choice. **DO NOT sign or initial your ballot.** (The envelope is the only item you need to sign).

You may request a new ballot by coming to the County Clerk's Office at  
the Historic Courthouse at 220 S. Lassen Street, Suite 5  
Susanville CA 96130

## TO RECORD YOUR VOTE:

- ◇ **DO NOT** deface or tear the ballot
- ◇ Remove your ballot stub before placing in envelope
- ◇ Place ballot in return envelope
- ◇ Return ballot to any Election Official
- ◇ **IF MAILING BALLOT**, postmark by Election Day **OR** return to any polling location on Election Day
- ◇ **SIGN YOUR ENVELOPE; YOUR VOTE IS NOT VALID WITHOUT IT**



# Campaigns & Elections

## VOTER INFORMATION

### How do I contact a candidate?

Local candidate contact information is posted on the Lassen County Registrar of Voter's page on the County Clerk-Recorder's website at:

[www.lassencounty.org](http://www.lassencounty.org).

### Where do I find a candidate's campaign finance report?

Campaign financial disclosure statements filed by local candidates are available in the County Clerk's office at the Historic Courthouse, located at 220 S. Lassen Street, Suite 5, Susanville, CA 96130. Cal-Access provides financial information supplied by state candidates, donors, lobbyists, and others can be found at

[www.sos.ca.gov](http://www.sos.ca.gov).

### Party Endorsements

In accordance with Section 13302(b) of the California Elections Code, the following qualified political parties have endorsed the following candidates for a voter nominated office:

#### ***California Democratic Party Official Endorsement***

#### ***Position for State Assembly District 1:***

***Elizabeth Betancourt***

***\*No other parties endorsed any candidates in the August 27, 2019 Election***

### Qualified Political Parties for August 27, 2019, Assembly District 1, Special Primary Election

American Independent Party = AI	Libertarian Party = LIB
Americans Elect Party = AE	No Party Preference = NPP
Democratic Party = DEM	Peace and Freedom Party = PF
Green Party = GRN	Republican Party = REP

# CANDIDATE'S STATEMENT OF QUALIFICATIONS



Each Candidate's statement in this pamphlet is volunteered and paid for by the candidate. This pamphlet may not contain a complete list of candidates. A complete list of candidates appears on the Sample Ballot.

Each statement of qualifications is printed EXACTLY as submitted by the candidate. Statements have not been checked for accuracy by any public agency.

You may also access this information on the Election page of the County Clerk-Recorder's website at the following address:

<http://www.lassencounty.org>

## STATEMENT OF CANDIDATE FOR: ASSEMBLY DISTRICT 1 SPECIAL PRIMARY

**MEGAN DAHLE**

**Age: 43**

**Farmer/Businesswoman/Mother**

I am a farmer, small business owner and mother of three children. For 4 generations my family has farmed in the North State. My husband and I hope to one day pass down our Lassen family farm to our kids.

As President of our school board, I further secured our school grounds, negotiated employee contracts, balanced every budget while maintaining a substantial reserve.

Parental rights are being eroded in Sacramento. I will work to protect our parental rights for age appropriate curriculum and school choice.

We need to prevent catastrophic fires by increasing forestry management, clearing out excess fuel and ensuring power lines are properly maintained, while making sure fire victims are compensated and can get back on their feet.

We must secure our borders and demand the state government end their sanctuary city policies which protect illegal immigrant criminals.

Decrease crime by repealing laws which let dangerous felons out of jail early.

We must ensure our farms and families have the water they need by increasing above ground storage.

The politicians often put North State's unique needs on the backburner. I'll put our needs first.

As your Assemblymember, I'll fight for Lassen County families, small businesses, and schools.

I'm proud to have the endorsement of five County Sheriff's, Sheriff Dean Growdon and our Board of Supervisors.

If you have any questions, call me at (530) 251-6757 or visit [www.votemegandahle.com](http://www.votemegandahle.com). I'd be honored to have your vote.



POLLING PLACES  
OPEN 7AM TO 8 PM,  
CHECK THE BACK OF THIS  
VOTER INFORMATION  
GUIDE FOR YOUR  
POLLING LOCATION

**STATEMENT OF CANDIDATE FOR:  
ASSEMBLY DISTRICT 1 SPECIAL PRIMARY**

**ELIZABETH BETANCOURT**

**Age: 39**

**Farmer/Watershed Scientist**

Just in the last year our North State has faced extreme tests of our faith as individuals and as communities. We've come together in amazing ways to rebuild from the Carr and Camp Fires, but we have more to do. With this in mind, I respectfully ask for your vote, and the honor of representing you in California's First Assembly District.

I have nearly 20 years of experience in forest and watershed stewardship, water resources planning, and local farming. I have worked with individuals representing the north state's tourism industry, timber representatives, environmental advocates, all levels of government, Native American tribes, small business owners, and community organizers. Fighting for clean water and stewarding our forests is something I've made progress on throughout our North State, in local government, the legislature, and beyond, and I am asking for your support to continue these efforts.

I'll be here to listen to you and look forward to working with you to learn about your challenges, and what your vision is for our North State. While this work is just beginning, all of us, together, are making a difference. With your support, we can do even more: I hope to count on your vote on August 27th.

**STATEMENT OF CANDIDATE FOR:  
ASSEMBLY DISTRICT 1 SPECIAL PRIMARY**

**JOSEPH TURNER**

**Retired Soldier**

Are you considering leaving California? Do you know any family or friends who have left or are planning to leave? "Politics as usual" have failed us as usual. This election is Fight or Flight. Do you take a real chance at challenging tyranny in Sacramento or do you move?

If you want to Fight, then vote for a Disabled Combat Veteran, Bronze Star Recipient, who has been tested and proven overseas and at home.

I spent 17 years Enlisted in the Army National Guard, have been politically active for Liberty, a former unpaid member of the Civil Grand Jury, and have stood alone publicly in victory to help defeat a dishonest sales tax increase in Lassen County.

A husband who made a promise to do everything possible to defend our daughter from indoctrination.

A father who is disgusted with the State for refusing to keep our children safe.

A land owner with vested interests in forest fuel abatement.

Assault weapon ban? Magazine ban? Handgun roster? Ammo background checks/fees?

All illegal/Unconstitutional.

Illegal aliens have priority over our veterans and National Guardsmen/women.

Highest poverty in the nation.

California is an oligarchy wrought with nepotism and corruption. We have no representation and we continue electing self-serving empty suits who violate our Rights.

The only real options we have in the super minority are to use the elected positions we have to investigate and sue the State for the harm committed against our citizens and our Rights.

Fight or Flight!

Vote Turner for Assembly.

**OFFICIAL BALLOT**  
**COUNTY OF LASSEN**  
**ASSEMBLY DISTRICT 1 SPECIAL PRIMARY ELECTION**  
**TUESDAY, AUGUST 27, 2019**

**INSTRUCTIONS TO VOTERS:**

1. To vote you must completely darken the oval ● next to the candidate or measure of your choice. If you mismark an oval or change your mind, exchange your ballot for a new one.
2. To write-in a name, you must completely darken the oval ● to the left of the line provided and write the name on the line.
3. All distinguishing marks or erasures are forbidden and make the ballot void.

**Voter-Nominated and Nonpartisan Offices**

All voters, regardless of the party preference they disclosed upon registration, or refusal to disclose a party preference, may vote for any candidate for a voter-nominated or nonpartisan office. The party preference, if any, designated by a candidate for a voter-nominated office is selected by the candidate and is shown for the information of the voters only. It does not imply that the candidate is nominated or endorsed by the party or that the party approves of the candidate. The party preference, if any, of a candidate for a nonpartisan office does not appear on the ballot.

**STATE**

**MEMBER OF THE STATE ASSEMBLY**  
**1st District**  
**Vote for ONE**

- |                       |   |                  |
|-----------------------|---|------------------|
| <input type="radio"/> | <b>PATRICK HENRY JONES</b><br>Small Business Owner        | Republican Party |
| <input type="radio"/> | <b>MEGAN DAHLE</b><br>Farmer/Businesswoman/Mother         | Republican Party |
| <input type="radio"/> | <b>LANE RICKARD</b><br>Business Owner/Consultant          | Republican Party |
| <input type="radio"/> | <b>ELIZABETH BETANCOURT</b><br>Farmer/Watershed Scientist | Democratic Party |
| <input type="radio"/> | <b>JOE TURNER</b><br>Retired Soldier                      | Republican Party |
| <input type="radio"/> | Write-in  |                  |

**NOTICE TO THE PHYSICALLY DISABLED VOTER:**

If the polling place is not accessible to the physically disabled voter, such voter is entitled to vote in one of the following ways: A precinct board member may take a regular ballot to the physically disabled person at a place as near as possible to the polling place and which is accessible to such person, qualify that person to vote, and return the voted ballot to the polling place; or if it is impractical to vote a regular ballot outside the polling place, please use attached application and apply for a Vote-By-Mail ballot.

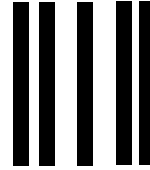


Any voter may apply to permanently Vote-By-Mail in accordance with California Elections Code Sections 3001 & 3201. An application is located on the back of this booklet.

↓ **Detach this stub before mailing Vote-By-Mail Application** ↓

FROM:

\_\_\_\_\_  
\_\_\_\_\_  
\_\_\_\_\_



PLACE  
FIRST CLASS  
POSTAGE  
HERE

DID YOU **SIGN YOUR APPLICATION** AND PRINT YOUR  
**RESIDENCE ADDRESS** ABOVE YOUR SIGNATURE?



**JULIE BUSTAMANTE**  
**LASSEN COUNTY CLERK-RECORDER**  
**220 S. LASSEN STREET, SUITE 5**  
**SUSANVILLE, CA 96130-4324**

Detach Here



Detach Here

**VOTE BY MAIL VOTING INFORMATION**

<b>JULY 29 2019</b>	<b>First day to request a Vote By Mail Ballot</b>	<b>PERMANENT VOTE BY MAIL STATUS:</b> Any voter may apply for Permanent Vote By Mail ballot status per Elections code Section 3201, by completing the written request form and checking the box on the back of this Voter Information Guide and Sample Ballot.
<b>AUGUST 12 2019</b>	<b>Last day to register or update address this election</b>	If you moved within the same county, you may vote on Election Day at your new address or at the office of the County Clerk. <b>HOWEVER</b> , you must register at your new address to vote in future elections. <b>These voters must vote a provisional ballot in this election.</b>
<b>AUGUST 20 2019</b>	<b>Last day to request a Vote By Mail Ballot</b>	You must be a registered voter in this county. Make a separate request for each election or request to be a permanent Vote By Mail Voter on the reversed side of this form. Sign your request in your own handwriting. Submit your request to the County Clerk's office no later than 5 PM on the date shown (the 7th day prior to Election Day).
<b>AUGUST 27 2019</b>	<b>Last day Vote By Mail Ballot can be accepted for counting</b>	<b>Vote By Mail ballots must be postmarked by Election Day and received 3 days after the Election, OR any polling place in Lassen county no later than 8 PM on Election Day.</b> A voter who is unable to return his/her ballot, may designate his or her spouse, child, parent, grandparent, grandchild, brother, sister or person who resides in the voter's household to return the ballot.

JULIE BUSTAMANTE  
LASSEN COUNTY CLERK-RECORDER  
220 S. LASSEN STREET, SUITE 5  
SUSANVILLE, CA 96130-4324



NON-PROFIT ORG.  
U.S. POSTAGE  
**PAID**  
**PCF**

BALLOT  
TYPE

POLLING PLACE OR VOTE BY MAIL VOTER



**APPLICATION FOR VOTE BY MAIL BALLOT:** I hereby apply for a vote by mail ballot for the **AUGUST 27, 2019, ASSEMBLY DISTRICT 1, SPECIAL PRIMARY ELECTION.** I certify under penalty of perjury under the laws of the State of California that the information on this application is true and correct.

X \_\_\_\_\_

Please *Sign* here-must have original signature from voter

\_\_\_\_\_ Date



PLEASE MAIL  
MY BALLOT TO:

Print Name: \_\_\_\_\_

Physical address: \_\_\_\_\_

Mailing address: \_\_\_\_\_

Last day to request ballot by mail: **AUGUST 20, 2019**

**PERMANENT VOTE BY MAIL  
APPLICATION**

CHECK THIS BOX IF YOU WISH TO  
**VOTE BY MAIL**  
**PERMANENTLY**



Detach Here

Detach Here



**NOTICE REGARDING APPLYING FOR A VOTE BY MAIL BALLOT**

If you find that for any reason you will be unable to vote in person on election day, promptly complete and sign the application for a *Vote By Mail* ballot printed above and return to:

**Julie Bustamante, Lassen County Clerk-Recorder, 220 S. Lassen Street, Suite 5, Susanville, CA 96130-4324**

Your application must reach the office of the County Clerk by August 20th, (7 days before the election). For further information call (530)251-8217.

**PERMANENT VOTE BY MAIL VOTER STATUS**

State law now allows any voter who so requests to be a Permanent Vote By Mail Voter. If you check the Permanent Vote By Mail box on the Application for Vote By Mail ballot, a ballot will automatically be sent to you for future elections. Failure to vote in two statewide elections will cancel your Permanent Vote By Mail status and you will need to reapply.

**ASSISTANCE FOR THE VISUALLY, HEARING, OR SPEECH IMPAIRED**

CA Secretary of State's office has a TDD (Telecommunications Device for the Deaf) for election information: 1-800-833-8683 (1-800-TDD-VOTE). For the visually impaired, audio tapes of State Ballot Measures are available from the County Clerk's office.

In an effort to update the voter rolls and reduce waste, the County of Lassen intends to implement provisions of elections Code Section 2224 which allows the County elections office to send a notice to voters who have not voted in any election in the past four years **AND** who have not updated their registration during these four years. The notice asks the voters if they still live at the address where they are registered to vote. Voters who have not voted in any election, nor updated their registration during the past four years but return the notice with an affirmative response, will remain on the active list of registered voters. Such voters who **DO NOT** respond affirmatively will be placed on the inactive voter list, and they will no longer receive election materials.