

VOTER INFORMATION PAMPHLET & **Sample Ballot**



**SENATE DISTRICT 1
SPECIAL PRIMARY ELECTION**

Tuesday

**MARCH 26, 2019 for
the County of Lassen**

**POLLS OPEN AT 7 AM
AND CLOSE AT 8 PM**

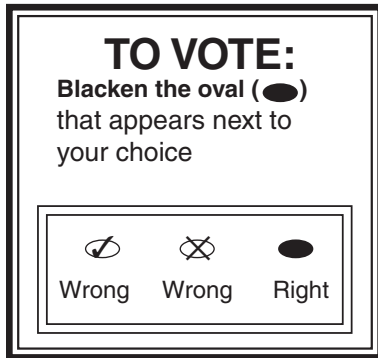
Compiled and Distributed by Lassen County Clerk-Recorder

ATTENTION!

**Your polling place may have changed or you could
live in a VOTE-BY-MAIL precinct, see back
cover for details.**

Application for VOTE-BY-MAIL, on back cover

Using Lassen County's Voting System



PRESIDENT Vote for **ONE**

- THOMAS A. EDISON
- ALBERT EINSTEIN
- HELEN KELLER
- FLORENCE NIGHTINGALE
- BOOKER T. WASHINGTON
- _____

TO VOTE:

- Use only black pen to mark the ballot.
- Blacken the oval (●) completely.
- Remember to check both sides of the ballot.
- Do not vote for more than the number of candidates to be elected for each office.
- If you make a mistake in marking your ballot, cross out the incorrect mark and write "Ok" next to your correct choice. **DO NOT** sign or initial your ballot. You may also return the ballot to the election office for replacement at the Historic Courthouse, 220 S Lassen Street, Suite 5, Susanville, CA 96130.

TO CAST A WRITE-IN VOTE:

- Locate the office for which you desire to cast a write-in vote.
- Write the name and position in the space provided.
- Blacken the oval (●) next to your choice.

Before
PRESIDENT
Vote for One

- GEORGE WASHINGTON
- ABRAHAM LINCOLN
- _____

After
PRESIDENT
Vote for One

- GEORGE WASHINGTON
- ABRAHAM LINCOLN
- Thomas Jefferson

TO RECORD YOUR VOTE:

- Once you have finished voting, put your ballot in the secrecy envelope and return it to the election officer.
- If you are voting by mail, you should remove your ballot stub before mailing your ballot back to the election department. **DO NOT** cut or deface the ballot in any way. Your envelope must be postmarked by Election Day, or returned to any polling location in Lassen County on Election Day.

POLITICAL PARTY KEY:

DEM = Democratic
GRN = Green
LIB = Libertarian

REP= Republican
AI = American Independent
PF = Peace and Freedom

NPP=No Party Preference

VOTER'S INFORMATION PAMPHLET



Political Party Endorsements

Political parties have the option of submitting candidate endorsements for printing in this book. Not all parties participate and parties may endorse any candidate even from another political party. The candidate's party preference does not necessarily mean that they have that political party's endorsement.

No candidate endorsements were submitted by any political parties for this election.

CAMPAIGN EXPENDITURE LIMITS

California law requires candidates running for State Senate to accept voluntary spending limits, in order to have the option to pay for a candidate statement in this guide.

Statements are printed in the random alpha order conducted by elections officials and are printed exactly as submitted including errors.

The following state legislative candidates have accepted the voluntary campaign spending limits.


State Senator – District 1

Kevin Kiley
Silke Pflueger
Steve Baird
Rex Hime
Brian D. Dahle
Theodore Dziuba

CANDIDATE'S STATEMENT OF QUALIFICATIONS

This pamphlet may not contain a complete list of candidates. A complete list of candidates appears on the Sample Ballot.

Each candidate's statement is volunteered and paid for by the candidate. Each statement is printed exactly as submitted by the candidate. All statements are the opinions of the authors and have not been checked for accuracy by any public agency.

A complete list of the candidates is on your ballot, their contact information and campaign financial disclosure statements are available online:  sos.ca.gov

**STATEMENT OF CANDIDATE FOR:
STATE SENATOR - DISTRICT 1**

KEVIN KILEY

Party Preference: Republican
Occupation: State Representative/ Businessman/
Cattle Rancher

I'm proud to be the only candidate for State Senate with a perfect 100% rating from the Howard Jarvis Taxpayers Association. North State taxpayers need a strong voice in the Senate. I will be that voice.

Californians pay the highest taxes in the country. Now Gavin Newsom wants to tax our water and Sacramento liberals and special interests are trying to dismantle Prop. 13. It's time to stand up to the big spenders at the State Capitol.

In the State Assembly, I have steadfastly opposed tax increases and wasteful spending, been a strong voice for small business and worked to make government more accountable. As a former prosecutor of violent felons, I have authored and championed tough new laws to protect you and your family.

As a small businessman and co-owner of a cattle company, I understand how government red tape and regulations harm small-business owners, farmers and ranchers. I will fight to protect North State water and improve forest management and fire protection.

My background and experience includes: State Assembly Representative; local cattle rancher; Deputy Attorney General and criminal prosecutor; and high school teacher. I was raised in our district and attended local schools.

I will proudly represent Lassen County in the Legislature and am proud to be endorsed by North State County Sheriffs, District Attorneys and 20 City Councilmembers from our district. I would be honored to receive your vote and pledge to represent you with integrity. Please visit www.ElectKevinKiley.com.

**STATEMENT OF CANDIDATE FOR:
STATE SENATOR - DISTRICT 1**

REX HIME

Party Preference: Republican
Occupation: Small Business Advocate

Too often politicians only look out for their own self-interest while taxpayers in places like Lassen County get stuck with the bill.

I'm not a politician. I dedicated my career in the private sector to reducing taxes. I was proud to help create a coalition that successfully stopped efforts by liberal politicians and special interests to repeal Proposition 13 and increase property taxes.

California has become unaffordable for working families. Sacramento Legislators are out of touch and continue to propose new taxes and costly regulations. They also pass laws that make our communities less safe. Enough is enough.

Working for Ronald Reagan shaped my values and taught me to fight for common sense conservative solutions:

I'll oppose higher taxes, stop unelected bureaucrats from increasing fees, and make sure the taxes we do pay are used for the purpose intended and not diverted to other purposes.

I'll fight to bring an end to human trafficking and seek common sense protections for victims including long-term protective orders from their abusers. I will also work to ensure that any individual who targets a minor for human trafficking be required register as a sex offender.

I'll fight to undo California's sanctuary state law that ties the hands of law enforcement.

I am the only veteran in this race, and proud to be endorsed by Governor Pete Wilson, National Tax Limitation Committee President Lew Uhler, and former Lassen County State Senator Tim Leslie.

I'd be honored to have your vote.

www.RexHime.com

**STATEMENT OF CANDIDATE FOR:
STATE SENATOR - DISTRICT 1**

BRIAN D. DAHLE

Party Preference: Republican
Occupation: Farmer/Businessman/
Assemblyman

I am a Lassen County farmer, business owner and citizen legislator who fights special interests and political elites to build a better future.

Defeating \$29 billion in new taxes and keeping property taxes down by protecting Prop 13 allowed you to keep more of your hard-earned money.

I held agencies accountable for wildfires, and I'm working to prevent future wildfire disasters and help fire victims recover.

Passing bipartisan legislation to end the gouging of hospital patients with surprise out-of-network bills, improving preventative health care and making pharmaceutical companies more accountable for rising drug prices made health care more affordable.

Garnering support for career training and after-school programs helped Lassen County students.

I fought to keep Honey Lake Power from closing and passed legislation to fund better rural internet service in Lassen County.

I led the fight against sanctuary cities that protect illegal immigrants from criminal prosecution and will push to reimburse California for millions spent incarcerating illegal immigrant criminals.

My record earned me 100% ratings from the California Taxpayers Association and California Police Chiefs Association.
As your Senator, I'll continue fighting for Lassen County families, businesses and schools.

Sheriff Dean Growdon; the California Professional Firefighters, Lassen County Farm Bureau, and every Lassen County Supervisor supports my campaign. I hope you do too.

I made the best decision of my life when I married Megan. Together, we have three wonderful children.

Please call me personally at (530) 251-3888
or visit www.briandahle.com.

ELECTIONS IN CALIFORNIA

The Top Two Candidates Open Primary Act requires that all candidates for a voter-nominated office be listed on the same ballot. Previously known as partisan offices, voter-nominated offices are state legislative offices, U.S. congressional offices, and state constitutional offices.

In both the open primary and general elections, you can vote for any candidate regardless of what party preference you indicated on your voter registration form. However, if one candidate receives more than 50% of the votes cast at the special primary election, he or she will be elected to fill the vacancy and no special general election will be held.

Write-in candidates for voter-nominated offices can still run in the primary election. However, a write-in candidate can only move on to the general election if the candidate is one of the top two vote-obtainers in the primary election. Additionally, there is no independent nomination process for a general election.

VOTER-NOMINATED OFFICES

Political parties are not entitled to formally nominate candidates for voter-nominated offices at the primary election. A candidate nominated for a voter-nominated office at the primary election is the nominee of the people and not the official nominee of any party at the general election. A candidate for nomination to a voter-nominated office shall have his or her qualified party preference, or lack of qualified party preference, stated on the ballot, but the party preference designation is selected solely by the candidate and is shown for the information of the voters only. It does not mean the candidate is nominated or endorsed by the party designated, or that there is an affiliation between the party and candidate, and no candidate nominated by the voters shall be deemed to be the officially nominated candidate of any political party. In the county voter information guide, parties may list the candidates for voter-nominated offices who have received the party's official endorsement.

Any voter may vote for any candidate for a voter-nominated office, if they meet the other qualifications required to vote for that office. The top two vote-getters at the primary election move on to the general election for the voter-nominated office even if both candidates have specified the same party preference designation. No party is entitled to have a candidate with its party preference designation move on to the general election, unless the candidate is one of the two highest vote-getters at the primary election.

If one candidate receives more than 50% of the votes cast at the special primary election, he or she will be elected to fill the vacancy and no special general election will be held.

OFFICIAL BALLOT
COUNTY OF LASSEN
SENATE DISTRICT 1 SPECIAL PRIMARY ELECTION
TUESDAY, MARCH 26, 2019

INSTRUCTIONS TO VOTERS:

1. To vote you must completely darken the oval ● next to the candidate or measure of your choice. If you mismark an oval or change your mind, exchange your ballot for a new one.
2. To write-in a name, you must completely darken the oval ● to the left of the line provided and write the name on the line.
3. All distinguishing marks or erasures are forbidden and make the ballot void.

Voter-Nominated and Nonpartisan Offices

All voters, regardless of the party preference they disclosed upon registration, or refusal to disclose a party preference, may vote for any candidate for a voter-nominated or nonpartisan office. The party preference, if any, designated by a candidate for a voter-nominated office is selected by the candidate and is shown for the information of the voters only. It does not imply that the candidate is nominated or endorsed by the party or that the party approves of the candidate. The party preference, if any, of a candidate for a nonpartisan office does not appear on the ballot.

STATE

STATE SENATOR
District 1
Vote for ONE

- | | | |
|-----------------------|---|------------------|
| <input type="radio"/> | KEVIN KILEY
Assemblyman/Small Businessman | Republican Party |
| <input type="radio"/> | SILKE PFLUEGER
Safety Advocate/Businesswoman | Democratic Party |
| <input type="radio"/> | STEVE BAIRD
Manager/Broker/Author | Democratic Party |
| <input type="radio"/> | REX HIME
Small Business Advocate | Republican Party |
| <input type="radio"/> | BRIAN D. DAHLE
Farmer/Businessman/Assemblyman | Republican Party |
| <input type="radio"/> | THEODORE DZIUBA
Businessman | Republican Party |
| <input type="radio"/> | Write-in | |



NOTICE TO THE PHYSICALLY DISABLED VOTER:

If the polling place is not accessible to the physically disabled voter, such voter is entitled to vote in one of the following ways: A precinct board member may take a regular ballot to the physically disabled person at a place as near as possible to the polling place and which is accessible to such person, qualify that person to vote, and return the voted ballot to the polling place; or if it is impractical to vote a regular ballot outside the polling place, please use attached application and apply for a Vote By Mail ballot. Any voter may apply to permanently Vote By Mail in accordance with California Elections Code Sections 3001 and 3201. An application is located on the back of this booklet.

Detach this stub before mailing back Vote-by-Mail Application

Detach Here



Detach Here

SEPARATE HERE

FROM:



PLACE STAMP HERE

DID YOU SIGN YOUR APPLICATION?



JULIE BUSTAMANTE
LASSEN COUNTY CLERK-RECORDER
220 S LASSEN STREET - SUITE 5
SUSANVILLE CA 96130-4324

Detach Here



Detach Here

VOTE BY MAIL VOTING INFORMATION

		PERMANENT VOTE BY MAIL STATUS:
FEB 25 2019	FIRST DAY TO REQUEST A VOTE BY MAIL BALLOT	Any voter may apply for Permanent Vote By Mail ballot status per Elections Code Section 3201, by completing the written request form and checking the box on the back of this Voter Information Guide and Sample Ballot.
MARCH 11 2019	LAST DAY TO REGISTER OR UPDATE ADDRESS THIS ELECTION	If you moved within the same county, you may vote on Election Day at your new address or at the office of the County Clerk. HOWEVER , you must register at your new address to vote in future elections. These voters must vote a provisional ballot in this election.
MARCH 19 2019	LAST DAY TO REQUEST A VOTE BY MAIL BALLOT	You must be a registered voter in this county. Make a separate request for each election or request to be a permanent Vote by Mail Voter on the reversed side of this form. Sign your request in your own handwriting. Submit your request to the County Clerk's office no later than 5 pm on the date shown (the 7th day prior to Election Day).
MARCH 26 2019	LAST DAY VOTE BY MAIL BALLOT CAN BE ACCEPTED FOR COUNTING	Vote by Mail ballots must be received in the office of the County Clerk or at any polling place in Lassen County no later than 8 PM on Election Day. A voter who is unable to return his/her ballot, may designate his or her spouse, child, parent, grandparent, grandchild, brother, sister or person who resides in the voter's household to return the ballot.

From

**JULIE BUSTAMANTE
LASSEN COUNTY CLERK-RECORDER
220 S LASSEN STREET - SUITE 5
SUSANVILLE CA 96130-4324**



NON-PROFIT ORG.
U.S. POSTAGE
**PAID
PCF**

SEPARATE HERE

TAKE THIS SAMPLE BALLOT TO YOUR POLLING PLACE FOR REFERENCE

BALLOT
TYPE

POLLING PLACE OR VOTE BY MAIL VOTER



[Empty box for polling place or vote by mail voter information]

[Empty box for ballot type information]

APPLICATION FOR VOTE BY MAIL BALLOT

I hereby apply for a vote by mail ballot for the:

I certify under penalty of perjury under the laws of the State of California that the information on this application is true and correct.

SIGN HERE

Signature as registered - Each applicant must sign own signature _____ Date _____

Print HOME Street Address, as shown on affidavit of registration _____ City _____ State _____ Zip _____

Please mail ballot to me at:



Name _____

Address _____ City _____ State _____ Zip _____

PERMANENT VOTE BY MAIL APPLICATION



CHECK THIS BOX IF YOU WISH TO BECOME A PERMANENT VOTE BY MAIL VOTER.

SEPARATE HERE

Detach Here



Detach Here



NOTICE REGARDING APPLYING FOR A VOTE BY MAIL BALLOT

If you find that for any reason you will be unable to vote in person on election day, promptly complete and sign the application for a Vote By Mail ballot printed above and return it to:

Julie Bustamante, Lassen County Clerk-Recorder, 220 S Lassen Street Suite 5, Susanville, CA 96130-4324

Your application must reach the office of the County Clerk not less than 7 days before the election. For further information call (530)251-8217.

PERMANENT VOTE BY MAIL VOTER STATUS

State law now allows any voter who so requests to be a Permanent Vote By Mail Voter. If you check the Permanent Vote By Mail box on the Application for Vote By Mail ballot, a ballot will automatically be sent to you for future elections. Failure to vote in two statewide elections will cancel your Permanent Vote By Mail status and you will need to reapply.

ASSISTANCE FOR THE VISUALLY, HEARING, OR SPEECH IMPAIRED

The Secretary of State's Office has a TDD (Telecommunications Device for the Deaf) for election information: 1-800-833-8683 (1-800-TDD-VOTE.) For the visually impaired, audio tapes of State Ballot Measures are available from the County Clerk's Office.

In an effort to update the voter rolls and reduce waste, the County of Lassen intends to implement provisions of Elections Code Section 2224 which allows the County Elections Office to send a notice to voters who have not voted in any election in the past four years AND who have not updated their registration during these four years. The notice asks the voters if they still live at the address where they are registered to vote. Voters who have neither voted in any election nor updated their registration during the past four years but who return the notice with an affirmative response will remain on the active list of registered voters. Such voters who do NOT respond affirmatively will be placed on the inactive voter list, and they will no longer receive election materials.