

PUBLIC MEETING

BIG VALLEY GROUNDWATER BASIN ADVISORY COMMITTEE WEDNESDAY, MARCH 3, 2021 at 4:00 P.M.

Adin Community Center, 605 Highway 299, Adin, CA 96006
[Public participation offered in person and via webinar or conference call.

Join the ZoomGov Meeting at:

<https://www.zoomgov.com/j/1602797140?pwd=a0lvcUk5MEVxbjJOSXlyWkJSemxydz09>,
Meeting ID: 160 279 7140 OR call in (listen-only-mode) at (833) 568-8864 US Toll-Free]

At the March 3, 2021, meeting, we will hear reports from Ad Hoc Committees on Sustainable Management Criteria, in preparation for the development of Revised Draft Chapter 7 (*Sustainable Management Criteria*) and Public Draft Chapter 8 (*Monitoring Networks*) of the Groundwater Sustainability Plan (GSP).

What is the Big Valley Groundwater Basin Advisory Committee (BVAC)?

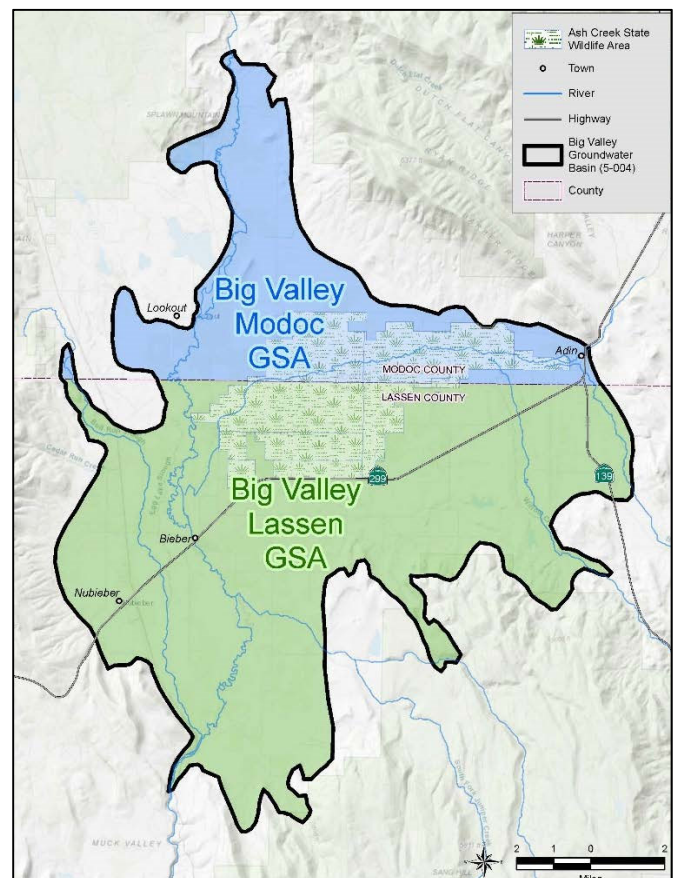
The BVAC is the committee formed to advise the Lassen and Modoc Groundwater Sustainability Agencies (GSAs) during development of the Groundwater Sustainability Plan (GSP).

What is a Groundwater Sustainability Plan?

A GSP is a detailed planning document, required by the Sustainable Groundwater Management Act (SGMA), that establishes a groundwater budget, minimum thresholds, and management actions to achieve long-term sustainability.

Who is developing the GSP in Big Valley?

Lassen and Modoc Counties have agreed to serve as the GSAs and work collaboratively to develop a single GSP for the entire Big Valley Groundwater Basin (BVGB). The BVAC has been established to help guide the process and all BVAC meetings will be open to the public and public comment is encouraged.



Big Valley Groundwater Basin

If you would like more information or want to be included on the interested parties list for the Big Valley Basin, please visit the GSP website or contact the GSAs directly at the phone numbers listed below.

GSP Website: <https://bigvalleygsp.org/>

Lassen County – (530) 251-8269

Modoc County – (530) 233-6201