

# PUBLIC MEETING

## BIG VALLEY GROUNDWATER BASIN ADVISORY COMMITTEE

THURSDAY, FEBRUARY 27, 2025 at 1:00 P.M.

Adin Community Center, 605 Highway 299, Adin, CA 96006

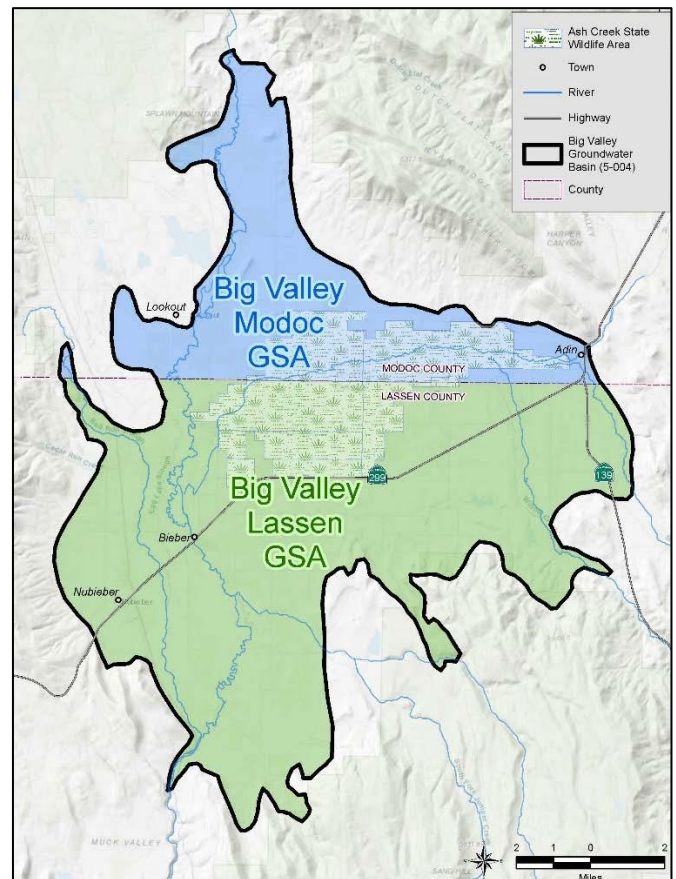
At the Thursday, February 27, 2025 meeting, we will be discussing the Big Valley Basin Annual Report for Water Year 2024 and providing an update on the numerical model and the Big Valley Basin Groundwater Sustainability Plan (GSP)

**What is the Big Valley Groundwater Basin Advisory Committee (BVAC)?** The BVAC is the committee formed to advise the Lassen and Modoc Groundwater Sustainability Agencies (GSAs) during development and implementation of the Groundwater Sustainability Plan (GSP).

**What is a Groundwater Sustainability Plan?** A GSP is a detailed planning document, required by the Sustainable Groundwater Management Act (SGMA), that establishes management actions to achieve long-term sustainability.

**What is the Annual Report?** The GSAs are required to prepare an annual report providing updates on Basin conditions. This annual report documents the Basin conditions over water year 2024 (Oct 1, 2023 to Sept 30, 2024).

**What has happened since the adoption of the revised of the GSP in April 2024?** In April 2024, the GSAs obtained grant funding to implement the recommendations from the GSP. We will be providing an update on the GSP implementation actions and their status.



To join the meeting remotely go to:

<https://www.zoomgov.com/j/1606974141?pwd=ZOPUevT17A5RMhV9dPvrXuF5xB9Lcd.1>

Meeting ID: 160 697 4141 Passcode: 622054

*If you would like more information or want to be included on the interested parties list for the Big Valley Basin, please contact the GSAs directly at the phone numbers listed below.*

Lassen County – (530) 251-8269

Modoc County – (530) 233-6201