

# **PUBLIC MEETING**

## **BIG VALLEY GROUNDWATER BASIN ADVISORY COMMITTEE**

**WEDNESDAY, NOVEMBER 3, 2022 at 3:00 P.M.**  
**Adin Community Center, 605 Highway 299, Adin, CA 96006**

**At the Thursday, November 3, 2022, meeting,  
we will be discussing topics associated with  
the implementation of the GSP**

### **What is the Big Valley Groundwater Basin Advisory Committee (BVAC)?**

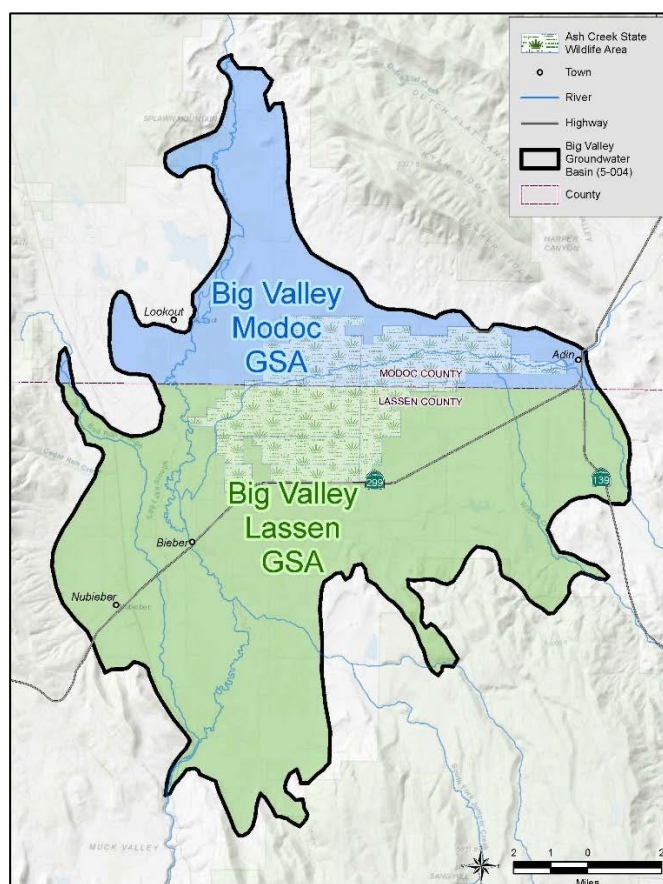
The BVAC is the committee formed to advise the Lassen and Modoc Groundwater Sustainability Agencies (GSAs) during development and implementation of the Groundwater Sustainability Plan (GSP).

### **What is a Groundwater Sustainability Plan?**

A GSP is a detailed planning document, required by the Sustainable Groundwater Management Act (SGMA), that establishes a groundwater budget, minimum thresholds, and management actions to achieve long-term sustainability.

### **Who developed the GSP in Big Valley?**

Lassen and Modoc Counties have agreed to serve as the GSAs and work collaboratively to develop and implement a single GSP for the entire Big Valley Groundwater Basin (BVGB). The BVAC has been established to help guide the process and all BVAC meetings will be open to the public and public comment is encouraged.



If you would like more information or want to be included on the interested parties list for the Big Valley Basin, please contact the GSAs directly at the phone numbers listed below.

Lassen County – (530) 251-8269

Modoc County – (530) 233-6201