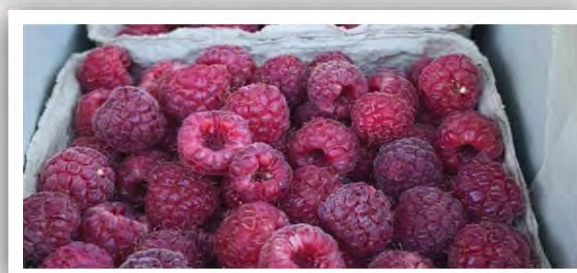
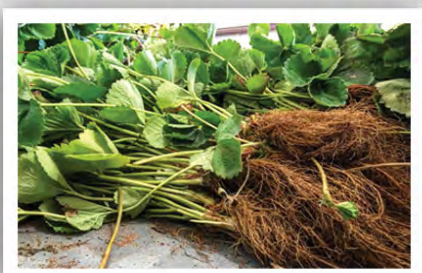
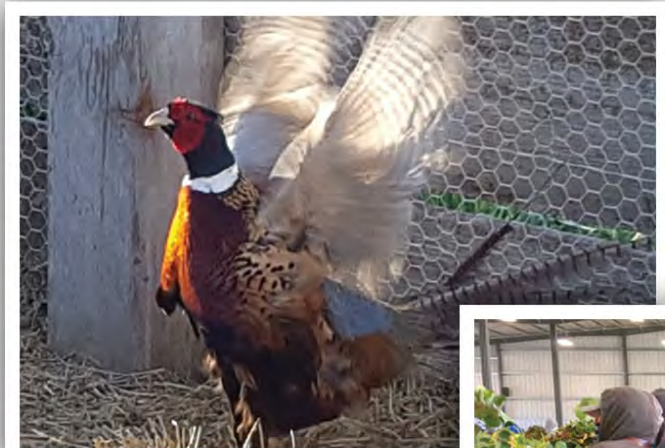


Lassen County

2019

CROP & LIVESTOCK REPORT



COUNTY OF LASSEN

DEPARTMENT OF AGRICULTURE/WEIGHTS & MEASURES

Craig A. Hemphill

Agriculture Commissioner/Sealer
175 Russell Avenue
Susanville, CA 96130-4215

Phone: (530) 251-8110 • **Fax:** (530) 251-2726

Email: agcommissioner@co.lassen.ca.us

November 1, 2020

Karen Ross, Secretary California Department of Food and Agriculture
And

The Honorable Board of Supervisors, County of Lassen

Supervisor, Chris Gallagher, Chairman, District 1

Supervisor, David Teeter, District 2

Supervisor, Jeff Hemphill, District 3

Supervisor, Aaron Albaugh, District 4

Supervisor, Tom Hammond, District 5

I am pleased to present the 2019 Lassen County Crop and Livestock report in accordance with the requirements of Sections 2272 & 2279 of the California Food and Agriculture Code. The report summarizes the estimated acreage, yield, gross value and sustainable agriculture of Lassen County's agricultural production for the 2019 calendar year.

The values presented in this report represent the gross value for products and do not reflect the cost of production, marketing, storage or transportation. It does not attempt to show county inventory, cost of production or net return to growers.

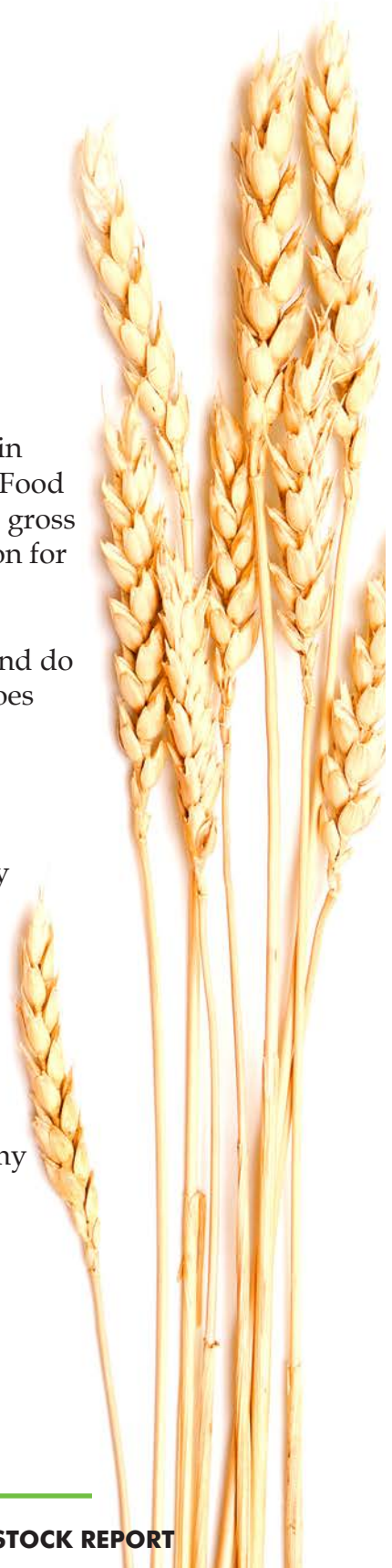
The total gross value of Lassen County agriculture production in 2019 was \$135,430,858.00 which is 1.4% lower than the gross value in 2018. Lower hay prices and timber yield, a 7.13 % and 27.37% decrease respectively, account for most of the overall decrease. Slightly higher beef, lamb and wool prices account for the 6.17% increase in Livestock & Poultry production while an increase in miscellaneous crops revenue was evident in the 8.59% growth in Seed, Vegetable & Nursery production.

I would like to thank the producers and public agencies that cooperated by supplying all of the data that was used in preparing this report, as well as my staff for all the effort that was put forth in compiling the final document.

Respectfully Submitted,

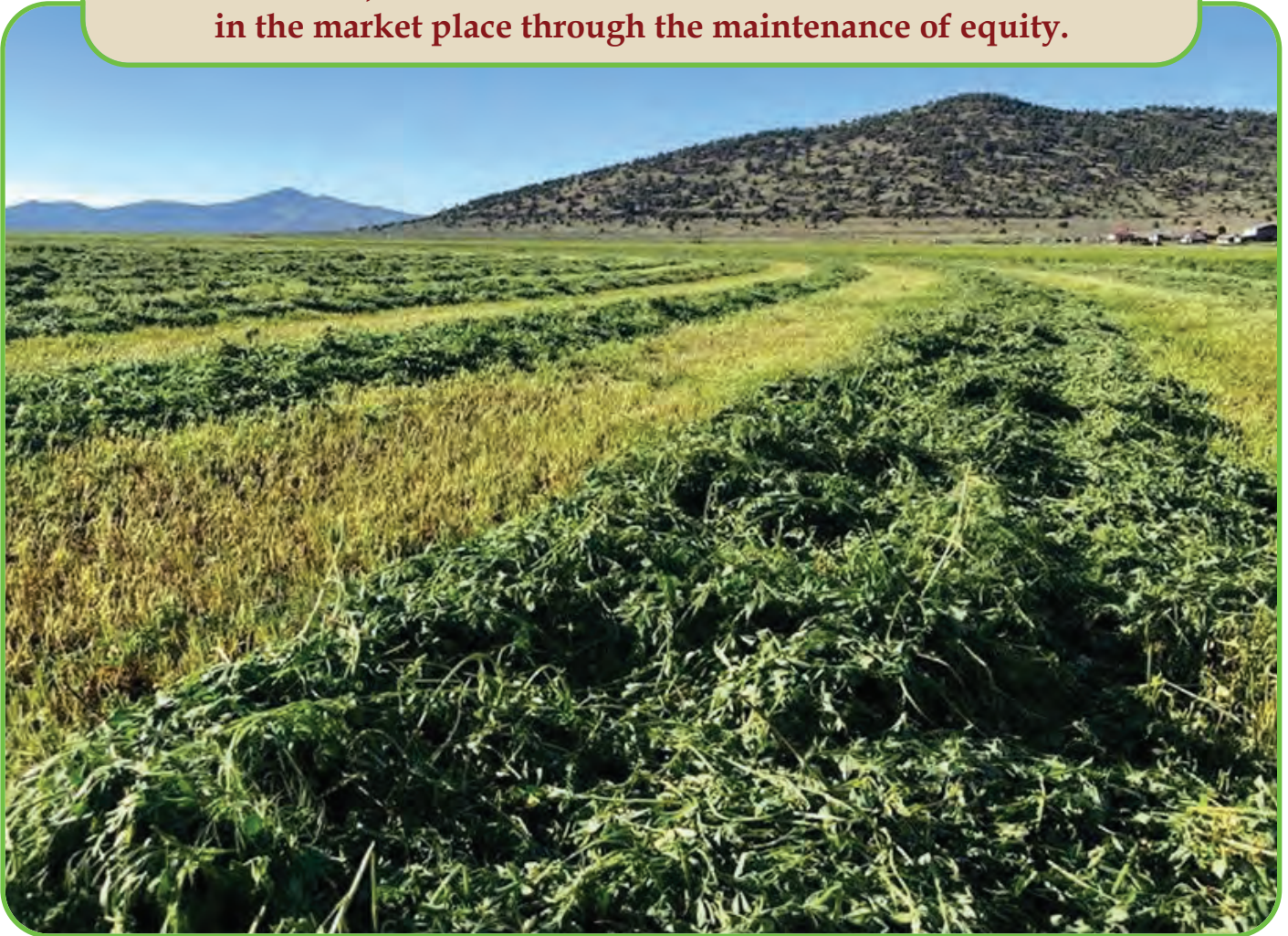


Craig A. Hemphill
Agriculture Commissioner/Sealer of Weights & Measure



OUR MISSION

The Agriculture Commissioner promotes Lassen County agriculture production by protecting it from injurious pests & diseases, to ensure the safety and wholesomeness of food and other products for the consumer, and to build consumer and business confidence in the market place through the maintenance of equity.



PERSONNEL & ASSOCIATES

Craig A. Hemphill, Agricultural Commissioner/Sealer of Weights & Measures

Tina Hilburn, Supervising Agriculture & Weights & Measures Inspector

Cheryl Lauritsen, Supervising Agriculture & Weights & Measures Inspector

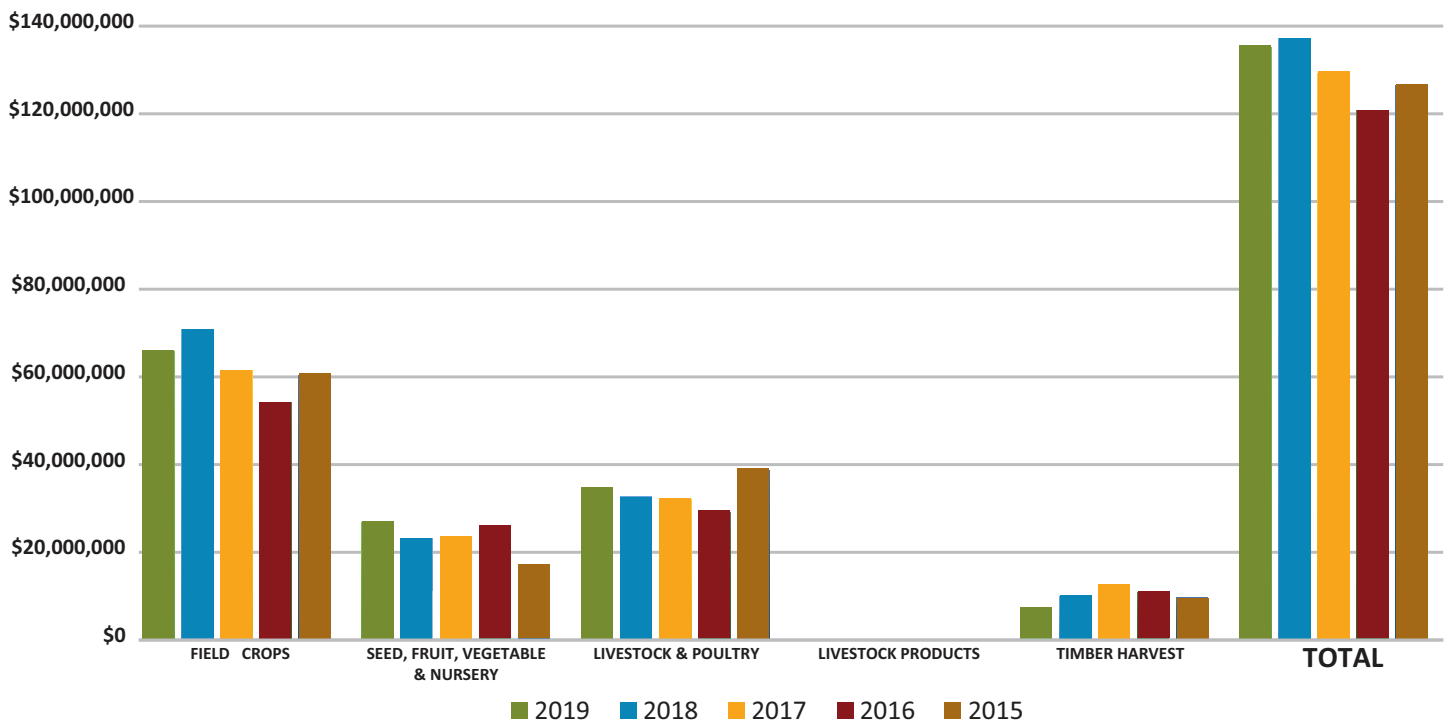
Robin Hansen, Biologist I

Christy Hanson, Seasonal ★ Robin Skelton-Snipes, Seasonal

Kevin Ostmeyer, Seasonal ★ Abby Tucker, Seasonal

George Affonso, USDA Wildlife Specialist

Special thanks to all of the farmers and ranchers who provided the valuable information and photos used to compile this report.



FIVE YEAR SUMMARY OF PRODUCTION VALUES

YEAR	Field Crops	Seed, Fruit Vegetable & Nursery	Livestock & Poultry	Livestock Products	Timber Harvest	TOTAL
2019	\$65,946,534	\$27,089,702	\$34,882,337	\$129,000	\$7,383,285	\$135,430,858
2018	71,026,039	30,409,189	32,729,948	129,000	10,165,480	144,588,657
2017	61,430,999	23,276,418	32,152,836	129,000	12,701,228	129,690,481
2016	54,273,808	25,982,234	29,253,438	129,000	11,083,367	120,721,847
2015*	60,707,113	17,293,893	38,900,335	129,000	9,735,464	126,790,805

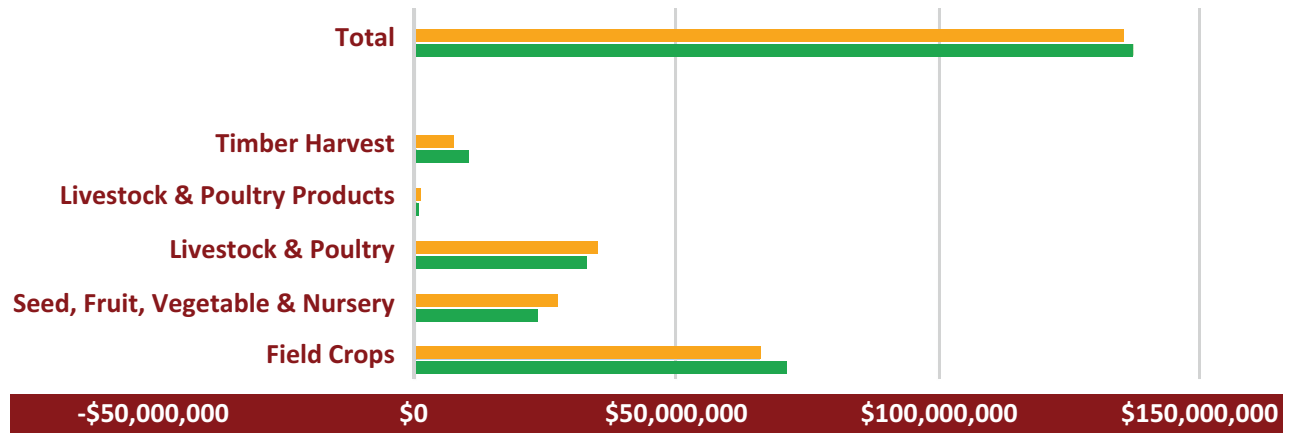
*2015 Timber Harvest and Total adjusted to include Christmas tree values

**2018 Christmas tree data not included in Timber Harvest Values

CHANGES IN GROSS VALUES

COMMODITY GROUP

	Gross Value 2018	Gross Value 2019	Changes In Gross Value
Field Crops	\$71,026,039	\$65,946,534	-7.15%
Seed, Fruit, Vegetable & Nursery	30,409,089	27,089,702	8.59%
Livestock & Poultry	32,729,949	34,882,337	6.17%
Livestock & Poultry Products	129,000	129,000	0%
Timber Harvest	10,165,480	7,383,285	-27.37%
TOTAL	\$144,588,657	\$135,430,858	-6.33%



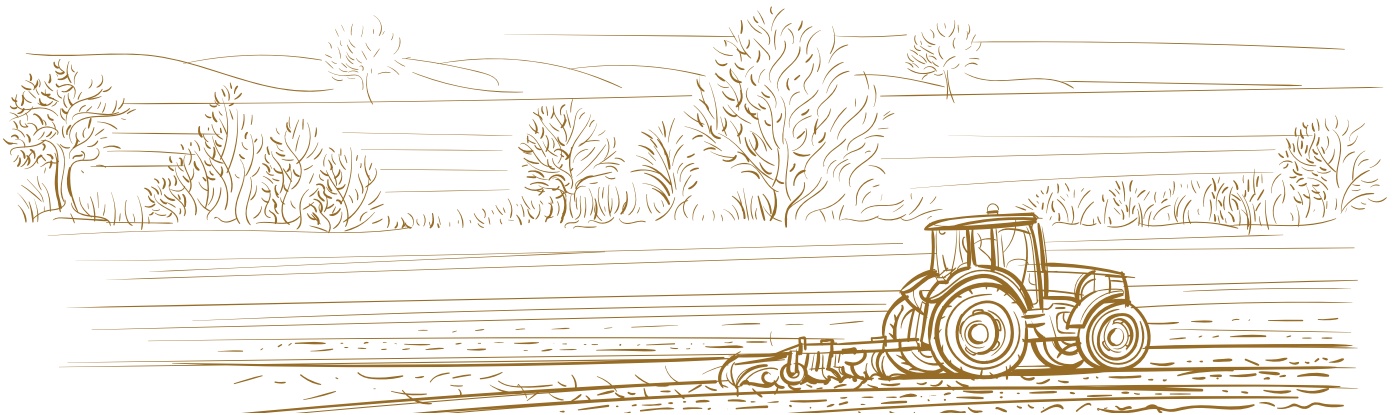
■ SUMMARY OF PRODUCTION VALUES Gross Value 2019

■ SUMMARY OF PRODUCTION VALUES Gross Value 2018





Located in scenic, beautiful northeastern California, Lassen County covers an area approximately the size of Connecticut. It is a rural area with wide-open spaces and unpolluted, crystal clear blue skies. It has a diverse terrain with thick forests, snow-covered mountains, and vast open high-desert agricultural valleys.



TOP LASSEN COUNTY CROPS

RANK 2019	Commodity	2019 Gross Value	Rank 2018
1	All Hay	\$57,224,546	1
2	Livestock	34,882,337	2
3	Misc. Nursery Crops	26,022,621	3
4	Timber	7,383,285	4
5	Pastureland	7,339,319	5
6	Wheat	1,132,600	7
7	Wild Rice	1,063,081	6
8	Livestock Products	129,000	8

FIELD CROPS

Crop	Year	Acres Harvested	Production Per Acre	Unit	Production Total	Value Per	Total Value
Hay, Alfalfa	2019	25,971	4.3	Ton	\$111,675	210.00	\$23,451,750
	2018	27,926	4.61	Ton	128,739	208.21	26,804,747
Hay, Grain	2019	8,607	2.2	Ton	18,935	172.00	3,256,820
	2018	9,156	3.34	Ton	30,581	126.00	3,853,206
*Hay, Other	2019	32,329	4.14	Ton	133,842	228.00	30,515,976
	2018	29,934	4.86	Ton	145,479	225.67	32,830,246
Wheat	2019	2,517	2.25	Ton	5,663	200.00	1,132,600
	2018	2,707	2.72	Ton	7,363	179.38	1,320,775
Pasture (Irrigated)	2019	23,000	6.00	AUM	138,000	35.00	6,210,000
	2018	23,000	6.00	AUM	138,000	35.00	4,830,000
Pasture (Non-irrigated)	2019	22,000	1.00	AUM	22,000	22.50	495,000
	2018	22,000	1.00	AUM	22,000	22.50	495,000
Pasture (Range)	2019	1,291,253	0.10	AUM	129,125	1.41	182,066
	2018	1,291,253	0.10	AUM	129,125	1.41	163,989
Aftermath (Stubble-all)	2019	20,000	1.00	AUM	20,000	23.00	460,000
	2018	20,000	1.00	AUM	20,000	23.00	460,000
**Miscellaneous	2019						250,000
	2018						250,000
TOTAL	2019						\$65,946,534
TOTAL	2018						\$71,026,040

*Grass Alfalfa Mix, Fescue, Timothy Hay, Orchard Grass Hay & Meadow Grass Hay

**Includes Straw, Barley, Oats Triticale, Rye & Corn for Fodder.

SEED, FRUIT, VEGETABLE & NURSERY CROPS

Crop	Year	Harvested Acreage	Production Per Acre	Unit	Production Total	Value Per Unit	Total Value
Wild Rice	2019	1325.8	1572	Lbs.	\$2,084,205	.51/Green Lb.	\$1,063,081
	2018	1469.5	1686	Lbs.	2,477,577	.665/Green Lb.	2,812,514
* Misc Crops	2019						26,026,621
	2018						20,463,904
* Alfalfa Seed, Apples, Belgian Endive Garlic See, Mint, Pumpkins, Seed Peas Strawberries, Peaches, Misc. Vegetables & Ornamental Flowers (Crops With Less Than 3 Producers)							\$27,089,702
TOTAL	2019						\$23,276,418
	2018						

REGISTERED DEVICES 2019—TOTAL 530

Class II	5
Computing/Electric	68
Counter Platform	10
Hanging/Spring Scale	3
Monoral/Meat Beam	1
Livestock	24
Vehicle Scales	15
Railroad Scales	1
Platform Scales	2



Hopper Scales	2
Wire/Cordage/Rope	1
Taxi	1
Retail Motor Fuel	327
Wholesale Fuel	42
Vehicle Meters	4
LPG Stationary Meters	17
LPG Vehicle Meters	7
Electric Submeters	0

LIVESTOCK & POULTRY

Commodity	Year	# Of Head	Liveweight	*Unit	Per Unit	Total
Cows	2019	7,634	91,226	CWT.	\$60.00	\$5,473,560
	2018	7,271	86,907	CWT.	53.67	4,664,299
Calves	2019	6,678	33,390	CWT.	162.36	5,421,200
	2018	6,612	33,060	CWT.	161.35	5,334,231
Heifers	2019	7,640	57,300	CWT.	151.35	8,672,355
	2018	7,564	56,730	CWT.	140.03	7,943,901
Steers	2019	10,389	77,918	CWT.	153.96	11,996,255
	2018	10,286	77,145	CWT.	144.85	11,174,453
Bulls	2019	1,298	23,364	CWT.	71.75	1,676,367
	2018	1,285	23,130	CWT.	76.34	1,765,744
Sheep/Lambs	2019	10,000	12,000	CWT.	131.55	1,578,600
	2018	10,000	12,000	CWT.	148.61	1,783,320
Misc. Livestock (pheasant, hogs, goats, chickens, alpaca)	2019					64,000
	2018					64,000
Total	2019					\$34,882,337
	2018					\$32,729,949

*Unit is per 100 lbs. (CWT)



LIVESTOCK PRODUCTS

Commodity	Year	Total
Includes: Wool, Eggs, Chicks, Apiary & Rabbits	2019	\$129,000
	2018	129,000
TOTAL	2018	\$129,000
	2017	\$129,000



TIMBER HARVEST

Commodity	Year	Production	Unite	Value	Total
Saw Timber*	2019	\$46,944	Net MBF	\$156.940	\$7,367,409
	2018	52,166	Net MBF	194.868	10,165,480
Christmas Trees*	2019	11,340	Linear Feet	1.400	15,876
	2018	N/A	N/A	N/A	N/A
Total**	2019				\$7,383,285
	2018				10,165,480



*Figures provided by the Timber Tax Division, California State Board of Equalization

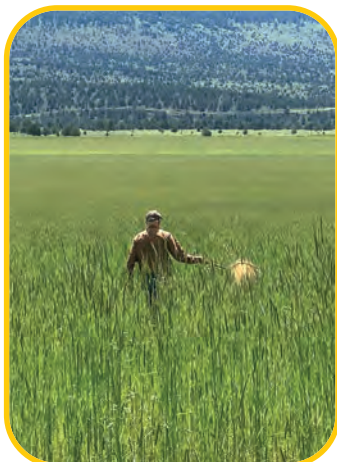
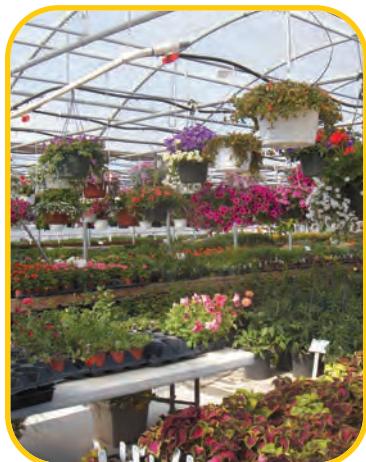
**Figures not available for Christmas Trees in 2019

Pest Exclusion

Exotic Pests and/or Target Pests

Incoming Plant Material via UPS, Air,
Truck or Mail

100 Shipments Inspected



Pest Detection

Gypsy Moth

106 Traps In Lassen County

Japanese Beetle

2 Traps in Lassen County

(None Detected For Either Pest)



REGISTERED ORGANIC PROGRAM

ORGANIC PRODUCTS	# OF ORGANIC RANCHES	ORGANIC ACRES	ORGANIC \$
Alfalfa Hay, Grain, Hay, Wild Rice, Cattle, Various Seed Crops, Seed Peas, Endive, Wheat, Pasture & Rangeland	12	120,644	\$4,682,419

DIRECT MARKETING

Lassen County Marketing Opportunities

Lassen Land & Trails Certified Farmer's Market—June Through October

Westwood Friday Night Market—June Through October



COMMUNITY OUTREACH

The Lassen County Agricultural Commissioners Office participates in a variety of educational events. It is not uncommon to see members from our department at the Lassen County Office of Education Third and Fourth Grade day activities providing local agricultural information to students teachers and parents. Kindergarten Ranch Day

is another opportunity to share agricultural knowledge with students, teachers and parents. We also provide educational activities pertaining to noxious weeds and Weights & Measures during the "Kiddies Day" event at the Lassen County Fair.



PEST ERADICATED	CONTROL METHOD	2019 NET ACRES	2018 NET ACRES
Scotch Thistle	Chemical/Mechanical	85.6545	214.356
Dalmatian Toadflax	Chemical/Mechanical/Biological	4.7258	6.504
Spotted Knapweed	Chemical/Mechanical	11.7708	4.363
Diffuse Knapweed	Chemical	.05	0
Squarrose Knapweed	Chemical	2.11	10.65
Leafy Spurge	Chemical	.255	0
Rush Skeletonweed	Chemical	1.56	1.37
Musk Thistle	Chemical	0	.05
Russian Knapweed	Chemical/Biological	0	6.615
Yellow Starthistle	Chemical/Mechanical	32.4218	46.527
Tall whitetop	Chemical	.814	12.55
Mediterranean Sage	Chemical	5.172	9.125
Hoary Cress	Chemical	0	0
Puncturevine	Chemical	3.7425	25.17
Canada Thistle	Chemical	1.2875	12.9
Wavyleaf Thistle	Chemical	0	0
Dyer's Woad	Chemical	5.7275	7.69
Sulfur Cinquefoil	Chemical	0	0
Yellowspine Wavyleaf Thistle Hyb.	Chemical	0	0
Bull Thistle	Chemical	0	.07
Klamath Weed	Chemical	0	.5
Willow Sprout Control	Chemical	0	0
Sagebrush & Rabbit Brush	Chemical	0	.2
Short White Top	Chemical	0	.025
Vegetation Management	Chemical	.7	.8
Hemlock	Chemical	0	.438
Sandbur	Chemical	0	0
Baby's Breath	Chemical	0	.03



Spray crews use a variety of methods and equipment in our ongoing war against noxious weeds. Through cooperative agreements with federal, state and local partners, the Agricultural Commissioner's office is able to better combat the constant invasion of "rated pests". Biological control methods are proving helpful with Dalmatian toadflax and Russian knapweed.



Lassen County Agricultural Commissioner

530-251-8110

Fax: 530-251-2726

175 Russell Avenue ★ Susanville, CA 96130