

**Table of Contents**  
**Planning Commission Meeting**  
**September 6, 2022**

FILE NUMBER:	IMP #1997-4
OPERATOR:	California Department of Transportation
PROPERTY OWNER	Bureau of Land Management
TYPE OF APPLICATION:	Extension to Interim Management Plan

Staff Report.....	001
Vicinity Map .....	004
Site Map .....	005
IMP Extension Request (2022).....	006
Division of Mine Reclamation No Comment Email.....	011
Original IMP Application (SMGB Form).....	012
Resolution No. 7-03-12.....	015
Resolution No. 7-03-17.....	017
Draft Resolution.....	019

LASSEN COUNTY PLANNING COMMISSION  
STAFF REPORT  
September 6, 2022

FILE NUMBER:	1997-4
PROPERTY OWNER:	United States Department of the Interior, Bureau of Land Management
OPERATOR:	California Department of Transportation
TYPE OF APPLICATION:	Interim Management Plan (IMP) Extension
GENERAL LOCATION:	Madeline, CA
ASSESSOR'S PARCEL NUMBER(S):	019-110-007
PROJECT SITE ZONING:	U-C-2 (Upland Conservation/Resource Management)
GENERAL PLAN:	Extensive Agriculture
ENVIRONMENTAL DOCUMENT:	Exempt (See Discussion)
ASSIGNED STAFF:	Cortney Flather, Natural Resources Technician

---

AUTHORITY FOR APPLICATION:

Lassen County Code, Section 9.60.120 Interim Management Plan (d)  
California Public Resources Code, Section 2770(h)(2) and 2727.1

REGULATING AGENCIES:

Regulatory authority for the proposed use includes, but is not limited to, the following agencies:

<u>Agency</u>	<u>Required Permits / Approvals</u>
Lassen County Planning Commission	IMP extension approval
State of California Department of Conservation, Division of Mine Reclamation	IMP extension review

---

PROJECT DESCRIPTION: Proposal for a five-year extension of existing IMP #1997-4 (approved by Planning Commission on July 5, 2012 by Resolution #7-03-12), to allow for the continuation of the temporary plan of mining operations, to be in effect during idle production periods. The existing approved IMP is considered a minor amendment of approved Reclamation Plan #1997-4. The IMP was extended on July 5, 2017 by Resolution 7-03-17 and the proposed extension will renew said IMP for an additional period not to exceed five years which is the final allowable extension pursuant to Public Resources Code § 2770(h)(2)(A). The surface mining operation is currently situated on 6 acres of a 21.49-acre parcel managed by the Bureau of Land Management. The subject parcel is zoned U-C-2 (Upland Conservation/Resource Management District) and is designated Extensive Agriculture by the Lassen County General Plan, 2000. The surface mining operation is located approximately 300 feet east of Highway 395 and 70 miles northeast of Susanville, CA via Highway 395.

## PUBLIC RESOURCES CODE:

An IMP is required by the Surface Mining and Reclamation Act, and can be extended according to Public Resource Code § 2770(h) as follows:

*2770 (h)(1) Within 90 days of a surface mining operation becoming idle, as defined in Section 2727.1, the operator shall submit to the lead agency for review and approval, an interim management plan. The review and approval of an interim management plan shall not be considered a project for purposes of Division 13 (commencing with Section 21000). The approved interim management plan shall be considered an amendment to the surface mining operation's approved reclamation plan, for the purposes of this chapter. The interim management plan shall provide measures the operator will implement to maintain the site in compliance with the chapter, including, but not limited to, all permit conditions.*

*(2) The interim management plan may remain in effect for a period not to exceed five years, at which time the lead agency shall do one of the following:*

- (A) Renew the interim management plan for an additional period no to exceed five years, which may be renewed for one additional five-year renewal period at the expiration of the first five-year renewal period, if the lead agency finds that the surface mining operator has complied fully with the interim management plan.*
- (B) Require the surface mining operator to commence reclamation in accordance with its approved reclamation plan.*

According to Public Resources Code § 2727.1, "idle" is defined as follows:

*"Idle" means to curtail for a period of one year or more surface mining operations by more than 90 percent of the operation's previous maximum annual mineral production, with the intent to resume those surface mining operations at a future date.*

## LASSEN COUNTY CODE:

An existing IMP may be extended according to Lassen County Code § 9.60.120(d) as follows:

*9.60.120 Interim management plans.*

*(d) The interim management plan may remain in effect for a period not to exceed five years, at which time the planning commission may renew the plan for another period not to exceed five years or require the surface mining operator to commence reclamation in accordance with its approved reclamation plan. (Ord. 509 § 2, 1992).*

## GENERAL PLAN AND ZONING:

The subject parcel is zoned U-C-2 (Upland Conservation/Resource Management District) and is designated Extensive Agriculture by the Lassen County General Plan, 2000

DISCUSSION: On June 4, 1997 the Lassen County Planning Commission approved Reclamation Plan #1997-4. The approved Reclamation Plan allows for the operation of an open-pit aggregate mine on 6 acres of a 21.49-acre parcel. Operations include mining of sand and gravel on an intermittent, as needed basis.

On July 5, 2012, the Planning Commission approved IMP #1997-4, to allow for a temporary plan of mining operations to be in effect during idle production periods (Resolution No. 7-03-12). On July 5, 2017, the Planning Commission approved an IMP extension request (Resolution No. 7-03-17). The IMP is considered a minor amendment to the approved Reclamation Plan #1997-4 and is to be in effect for no more than five years from the date of approval and must address the requirements of Public Resource Code 2770(h).

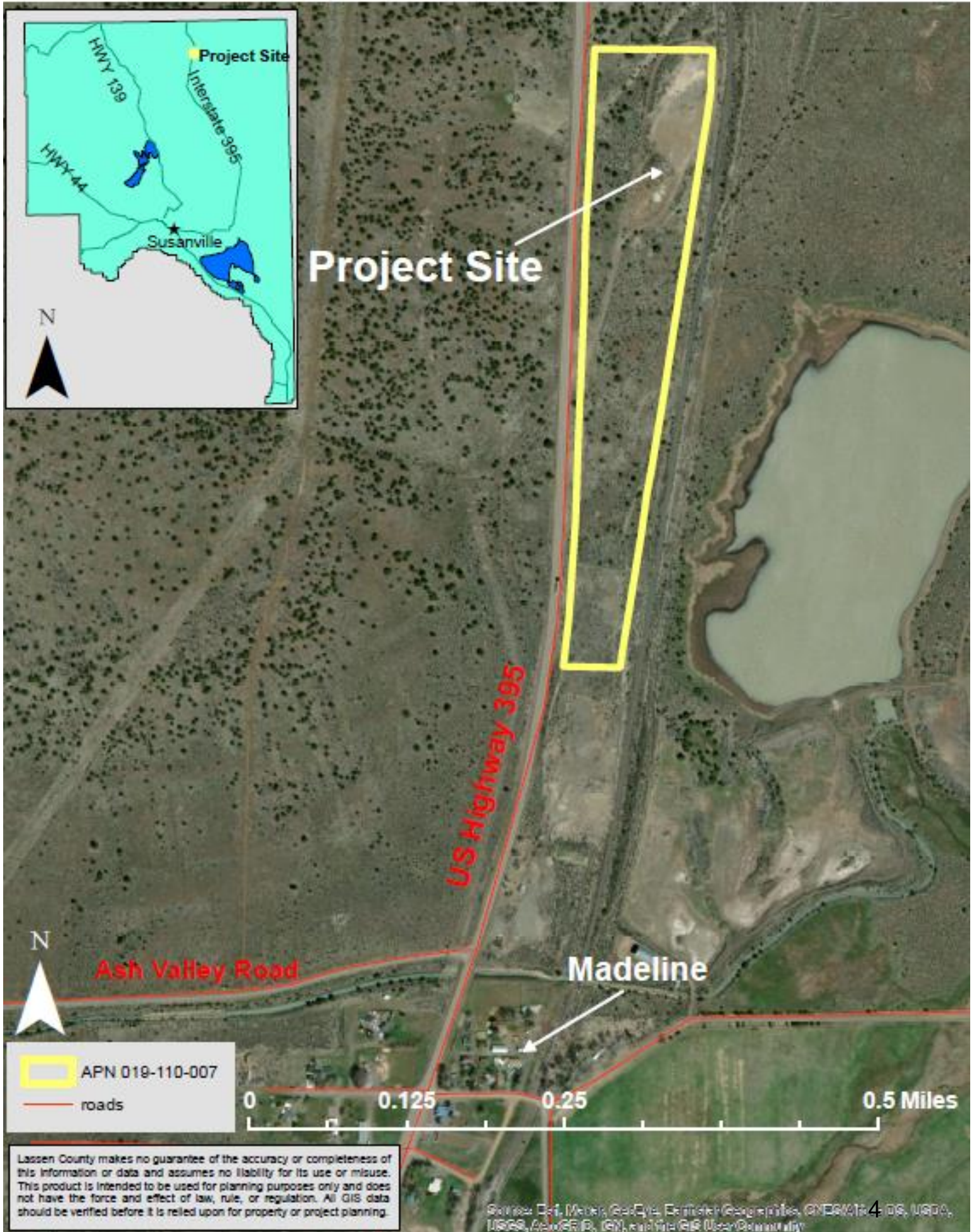
On July 18, 2022, the Lassen County Department of Planning and Building Services, acting as the Lead Agency for the implementation of the Surface Mining and Reclamation Act, received a request from the mine operator for a five-year extension of the aforementioned approved IMP #1997-4.

ENVIRONMENTAL DOCUMENT: IMPs, and therefore extensions to IMPs, are not subject to the California Environmental Quality Act (CEQA) as they are not considered a “project” as defined by Section 15378 of the Guidelines and SMARA Section 2770(h)(1).

STAFF RECOMMENDATION: Staff has reviewed the enclosed request to extend approved Interim Management Plan #1997-4 and finds that it meets Lassen County Code Section 9.60.120 and Public Resources Code Section 2770(h), and that the surface mining operator has complied fully with the Interim Management Plan to date.

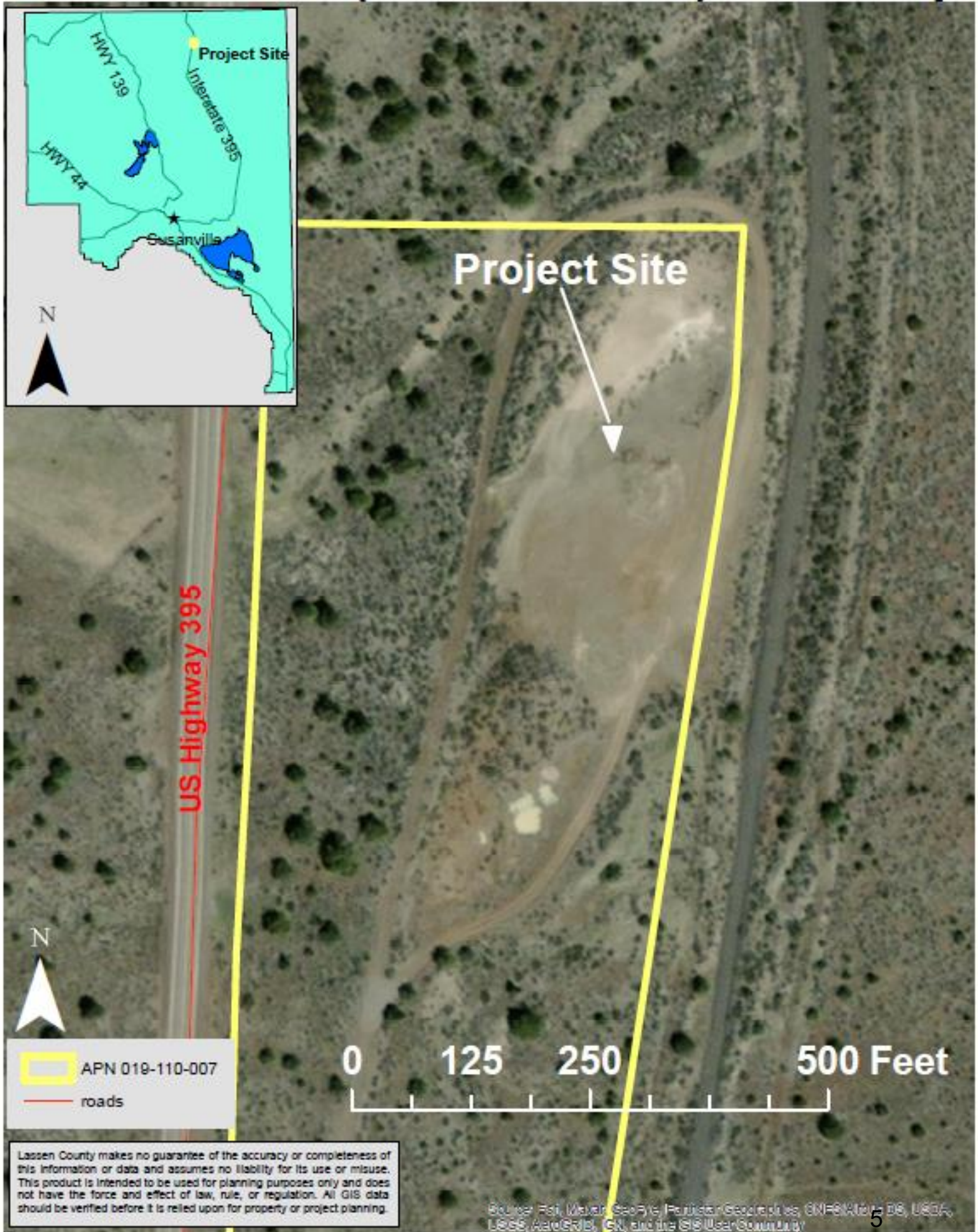
Staff recommends that the Planning Commission adopt a resolution approving the extension to Interim Management Plan #1997-4.

# Madeline Pit (#91-18-0027) Vicinity Map





# Madeline Pit (#91-18-0027) Site Map



## DEPARTMENT OF TRANSPORTATION

1657 RIVERSIDE DRIVE  
REDDING, CA 96001  
PHONE (530) 225-2084  
FAX (530) 225-3435  
MS 17  
www.dot.ca.gov



Making Conservation  
a California Way of Life.

July 18, 2022

LASSEN COUNTY PLANNING COMMISSION  
Department of Planning & Building Services  
Attn: Jason Ingram, Chairman  
707 Nevada Street, Suite 5  
Susanville, CA 96130-3912

RECEIVED

JUL 18 2022

RE: Interim Management Plan  
IMP#1997-4 CA Mine ID# 91-18-0027 Madeline site

LASSEN COUNTY DEPARTMENT OF  
PLANNING AND BUILDING SERVICES

Dear Mr. Ingram,

I am requesting a 5 year extension of the Interim Management Plans (IMP): IMP#1997-4. There will be no changes made to the previously approved reclamation plans (California Public Resources Code §2770h; Lassen County Code §9.60.120). Madeline site is not commercial operations and Caltrans operates this mine only to provide material for the maintenance of the state highways. There may be years when there is no need for extracted material for use on the state highways; as a consequence, operation of the mine is intermittent and on an "as-needed" basis.

CA Mine ID#91-18-0027 Madeline

The mining operation is in compliance with the Reclamation Plan and all approved fees are current. The Use Permit is in compliance and does not expire until 5/6/2049. As written in the Reclamation Plan, the quantity of material reserves over the life of the mine is estimated to be 150,000 CY or 354,000 short tons. To date (since 1997) the quantity of material extracted has totaled 5,354 (2,269 Cy); therefore, there remains potential for useful mineral at the site.

Although the production is intermittent, Caltrans intends to operate the mines until such time it is determined not to be in the best interest of the State. If you have any questions, please contact me at (530) 225-2084.

Sincerely,

*Burney Lord*

Burney Lord  
Caltrans District 2  
SMARA/Disposal Site Coordinator  
Office (530) 225-2084  
Cell (530) 227-4242



Madeline Pit  
ID #91-18-0027

## Interim Management Plan

### a. Site Description

- i. The approximate size of disturbed area is 4 acres.
- ii. District 2 Highway Maintenance, Department of Transportation (Caltrans), currently operates an open pit mine for sand and gravel, on an intermittent as-needed basis, to maintain the state highways and is not a commercial operation. Material is removed by means of a rubber tired front end loader or excavator.
- iii. This site is located in rural Lassen County, .2 miles north of Madeline on state route 395. There is a dirt road approach to the mine of approximately .12 miles off the state highway. The site is surrounded by miles of open range and undeveloped land, with no residences located within the general vicinity.
- iv. Idle status is requested in accordance with the definition of "idle" contained in Public Resource Code Section 2727.1.
- v. Material is only extracted on an as-needed basis dependent upon the needs for state highway maintenance. Mining activities could resume as soon as 2012 or 2013.
- vi. No equipment or facilities are kept onsite.
- vii. No production activity occurred in 2011.

### b. Erosion Control Plan

The topography of the site is relatively level with no concerns of erosion. The mining boundaries are sloped inward to assure no runoff will occur. Precipitation typically infiltrates the permeable soils in this area quickly. There are no waterways or drainage ditches located on this site. This site is closely monitored for any signs of erosion and Best Management Practices (BMPs) will be implemented. The Statewide Stormwater Management Plan (SWMP) addresses discharges of storm water with BMP standards and practices as a means to achieve the Department's compliance with State, Federal, and local laws and policies. The SWMP practices and procedures include routine training, monitoring, reporting, and evaluation.

### c. Revegetation Plan

MADELINE PIT REVEGETATION PROGRAM		
Shrubs and Grasses to be planted as seed broadcast and blown into soil		
Species	Latin Name	Target Density
<u>Blue-Bunch Wheatgrass</u>	<i>(Pseudoroegneria spicata)</i>	12 lbs/acre
<u>OR Thurbers Needlegrass</u>	<i>(Achnatherum thurberianum)</i>	12 lbs/acre
<u>OR Squirreltail</u>	<i>(Elymus elymoides)</i>	12 lbs/acre
AND		
<u>Intermediate Wheatgrass</u>	<i>(Thinopyrum intermedium)</i>	12 lbs/acre
<u>OR Crested Wheatgrass</u>	<i>(Agropyron cristatum)</i>	12 lbs/acre
<u>AND Basin Big Sage</u>	<i>(Artemisia tridentate)</i>	2 lbs/acre



## REVEGETATION STANDARD

Native grass and flower seeds purchased from a commercial seed company that collects native seeds for this general geographic area will be broadcast to reestablish vegetation to this site. Seeds to be broadcast with live viable seed in early fall, at a rate of 12 lbs per acre for grasses and 2 lbs per acre for shrubs. All disturbed areas will be graded along the contour and scarified, which will act as sites for seeds and moisture. Site will be mulched at approximately 1500-2000 pounds per acre of rice straw to prevent wind erosion of soil. Upon completion of reclamation, if erosion is observed, additional erosion control will be implemented as well as weed control, supplemental seeding or planting to achieve acceptable site rehabilitation as per the Reclamation Plan specific to the site.

The recommended seed mix was developed after consulting with a BLM Range Biologist and an UC Berkeley Extension Farm Advisor.

### d. Public Safety

This site is located in a very remote urban area of Lassen County, with a dirt road approach off of Hwy 395 to the site of approximately .12 miles. Due to the topography of Hwy 395 in relation to the site, the site is obscured from the public travelling on Hwy 395. The area consists of open range with very few residents or commercial businesses located in the general vicinity. This mine has been in operation for over 50 years and there has never been an incident in regards to public safety. The slopes of the mine are all 2:1 or flatter with low to moderate slope height. This site is regularly monitored by the maintenance staff that work in this area. If, at any time, public access to the site becomes a concern, Caltrans will reevaluate the site with BLM to discuss control measure options. Currently there is a discussion between Caltrans and BLM about posting a "Keep Out" or similar sign at the entrance to the site.

### e. Maintenance and Monitoring

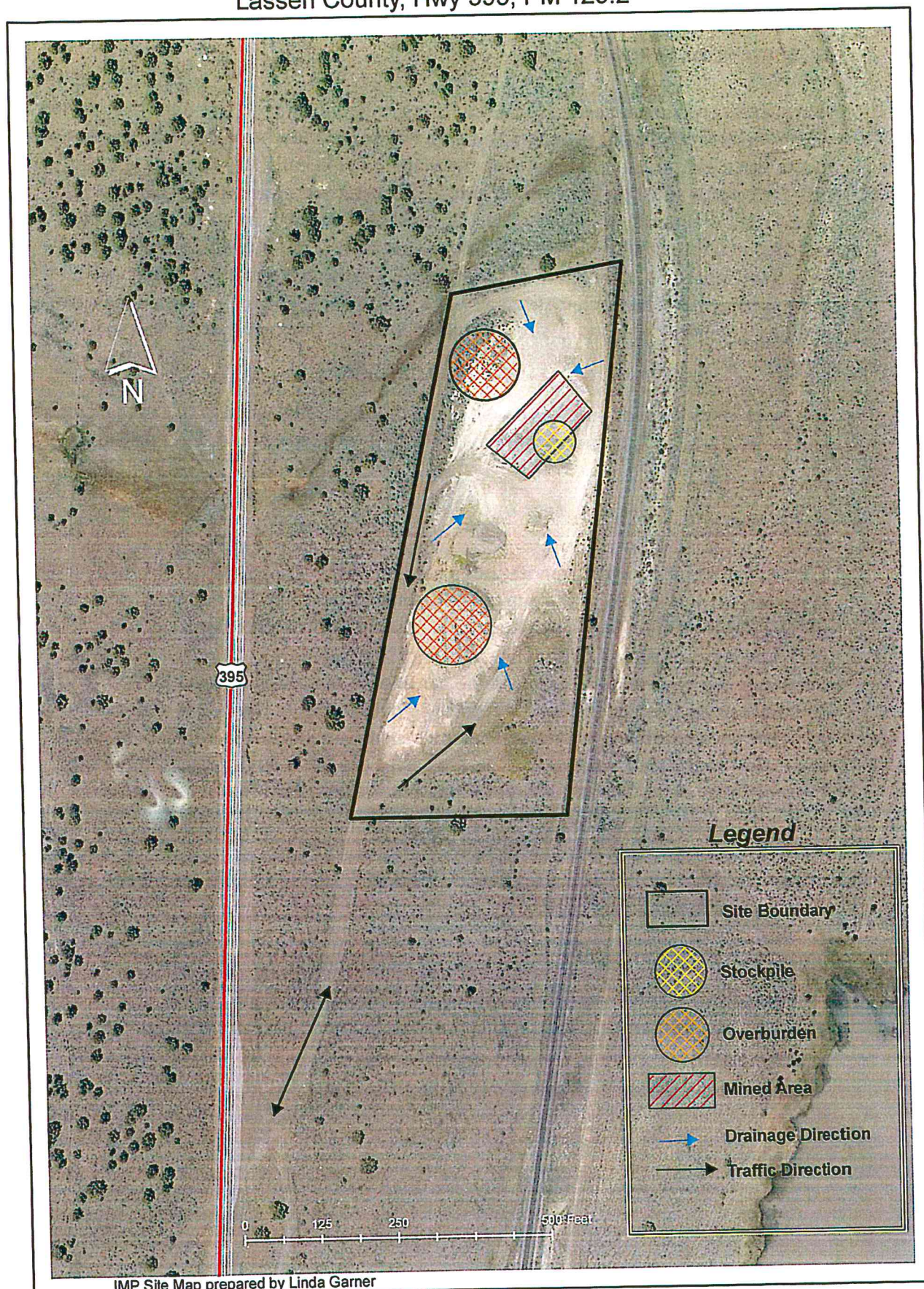
Maintenance Supervisors are responsible for various sections of the state highways within District 2. The Maintenance crews, assigned to the Alturas Maintenance Station, routinely monitors the activities within the assigned areas of responsibility, which include parts of SR 299 and Hwy 395, as well as this site. Monitoring will continue throughout the duration of operation of this mining pit.

### f. Site Map

See Attached Site Map, Topographical Map, and Site Photos



Madeline Pit IMP Site Map ID# 91-18-0027  
Lassen County, Hwy 395, PM 129.2









## Cortney Flather

---

**From:** Gomes, Amy@DOC <Amy.Gomes@conservation.ca.gov>  
**Sent:** Friday, August 19, 2022 2:38 PM  
**To:** Cortney Flather  
**Cc:** Moore, Jacquelynn@DOC  
**Subject:** Madeline Pit (CA Mine ID# 91-18-0027) IMP (1st Renewal)

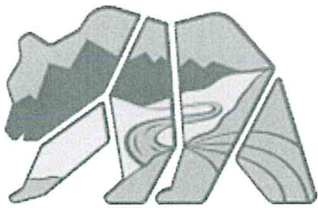
This message comes from an external sender. EXTERNAL SENDER WARNING!

Good Afternoon Cortney,

The Division of Mine Reclamation (Division) will not be sending out a comment letter for the Madeline Pit (CA Mine ID# 91-18-0027) Interim Management Plan submittal. Please reach out if you have any questions.

Thank you

Amy



### Amy M. Gomes

Environmental Scientist, Environmental Services Unit  
Division of Mine Reclamation

#### California Department of Conservation

715 P Street, MS 1905, Sacramento, CA 95814

T: (916) 616-1558

E: [Amy.Gomes@conservation.ca.gov](mailto:Amy.Gomes@conservation.ca.gov)



CONFIDENTIALITY NOTICE: This communication with its contents may contain confidential and/or legally privileged information. It is solely for the use of the intended recipient(s). Unauthorized interception, review, use or disclosure is prohibited and may violate applicable laws including the Electronic Communications Privacy Act. If you are not the intended recipient, please contact the sender and destroy all copies of the communication.



# INTERIM MANAGEMENT PLAN FORM

THE STATE MINING AND GEOLOGY BOARD



State of California  
DEPARTMENT OF CONSERVATION  
STATE MINING AND GEOLOGY BOARD  
INTERIM MANAGEMENT PLAN FORM

CA MINE ID# 91-18-0027

MINE NAME Madeline Pit

1. Company Operating California Department of Transportation	Site Contact Person Linda S. Garner	Telephone (530) 225-3375
Street Address/P.O. Box No. 1657 Riverside Dr / P.O. Box 496073	City Redding	State/ZIP Code/County CA 96001 Shasta County

2. Designated Agent's Name (Individual must reside in CA) Linda S. Garner, SMARA Coordinator, CALTRANS	Mailing Address P.O. Box 496073	
City Redding	ZIP Code 96049	Telephone (530) 225-3375

3. Owner of Mining Operation California Department of Transportation	Telephone (530) 225-3375	
Mailing Address P.O. Box 496073		
City Redding	State/ZIP Code CA 96049	Country (If other than U.S.A.)

4. Landowner US Dept of Interior	Assessor's Parcel # 19-110-07
Mailing Address 120 S. Main Street	Telephone (530) 233-5811
City/State/ZIP Code Alturas, CA 96101	Country (If other than U.S.A.)

5. Number or description of reclamation plan amended by IMP Use Permit #CA320, 1996 Reclamation Plan	
Date Approved Permit (5/6/1999) Rec Plan (6/4/1997)	Copy Attached? <input checked="" type="checkbox"/> Yes <input type="checkbox"/> No

6.a. Date Mine Became Idle 1/1/2010	6.b. Date Mining Expected to Resume 2012 or 2013
--	---

7.a. Previous Maximum Annual Production 1669 short tons	7.b. Production While Idle production -less than 10% of previous annual max
--	--

RECEIVED

MAR 21 2012

Lassen County Department of  
Planning and Building Services

# INTERIM MANAGEMENT PLAN FORM

## THE STATE MINING AND GEOLOGY BOARD

8. ☒ Yes ☐ No Financial Assurances approved by Lead Agency. Complete section below for approved Financial Assurances:

### ATTACH COPY AND PROOF OF APPROVAL

a. Amount \$40,272	Type Pledge of Revenue	Date Posted 07/01/2010	Date of Annual Review by Lead Agency 01/10/2011	Expiration Date or Renewal Date (If applicable) 06/30/2014
b. <input type="checkbox"/> Yes <input checked="" type="checkbox"/> No Proposed changes to Financial Assurance.		<input type="checkbox"/> Yes <input checked="" type="checkbox"/> No Financial Assurance Cost Estimate attached.		

A plan for maintaining the site in a safe and stable condition that includes the following elements must be attached to this form. Check the following boxes to verify that the appropriate information is attached.

### 9. Management Plan (Attach narrative that addresses all of the following.)

- a. ☒ Description of Surface Mining Activities
- b. ☒ Erosion Control Plan

If vegetation will not be used to control erosion while the site is idle, provide an explanation and describe an alternative method for surface erosion control in the previous section.

- c. ☒ Revegetation Plan
- d. ☒ Public Safety
- e. ☒ Monitoring and Maintenance Plan
- f. ☒ Site Photos
- g. ☒ Map

Check the appropriate boxes and attach a map that clearly depicts the relevant information at a legible scale.

- ☒ Current Topography
- ☒ Permit Reclamation Plan Boundary
- ☒ Areas Disturbed by Surface Mining Operations
- ☒ Stockpiles of Ore, Overburden, Waste, etc.
- ☐ Sedimentation Pond
- ☐ Office, Shop, Scalehouse, or Other Structures
- ☐ Utilities
- ☒ Site Drainage
- ☐ Erosion Control Structures
- ☐ Cross Sections
- ☐ Additional Information

---



---



---



---



---



# **INTERIM MANAGEMENT PLAN FORM** **THE STATE MINING AND GEOLOGY BOARD**

**10. Attachments**

- ☒ Approved reclamation plan (Attach only if there are proposed changes)
- ☒ Financial Assurance Cost Estimate
- ☒ Approved Financial Assurance and Proof of Approval
- ☐ Storm Water Pollution and Prevention Plan (Attach only if the SWPPP will be used in lieu of separate erosion control plan)
- ☒ Permit
- ☐ CEQA Mitigation and Monitoring Plan (Attach if mitigation measures were imposed in approving the reclamation plan)

Prepared by	<i>Lyle J. Garner</i>	Date	<i>3/19/2012</i>
Submitted by	<i>Lyle J. Garner</i>	Date	<i>3/19/2012</i>
Approved by		Date	

RESOLUTION NO. 7-03-12

RESOLUTION OF THE LASSEN COUNTY PLANNING COMMISSION APPROVING INTERIM MANAGEMENT PLAN #1997-4, BUREAU OF LAND MANAGEMENT AND CALIFORNIA DEPARTMENT OF TRANSPORTATION FOR APPROVED RECLAMATION PLAN #1997-4.

WHEREAS, the Planning Commission of Lassen County, after due notice and a public hearing held on July 5, 2012, has considered Interim Management Plan #1997-4, Bureau of Land Management and California Department of Transportation, to allow for a temporary plan of mining operations to be in effect during idle production periods. The proposed Interim Management Plan is considered a minor amendment of approved Reclamation Plan #1997-4 and is to be in effect for no more than five years and must address the requirements of Public Resources Code 2770(h). The existing mining operation is located approximately 0.60 miles north of the intersection of Highway 395 and County Road 527, in Madeline. A.P.N.: 019-110-07; and

WHEREAS, the Planning Commission of Lassen County is responsible for the consideration and approval of the proposed Interim Management Plan which is considered a minor amendment to the approved Reclamation Plan #1997-4; and

WHEREAS, the Planning Commission has considered at a public hearing duly noticed and held on July 5, 2012, Interim Management Plan #1997-4, Bureau of Land Management and California Department of Transportation; and

WHEREAS, the Environmental Review Officer of the County of Lassen has determined that Interim Management Plans are not subject to the California Environmental Quality Act (CEQA) as they are not considered a "project" as defined by Division 13, Section 21000 of the guidelines.

NOW, THEREFORE, BE IT RESOLVED AS FOLLOWS:

1. The foregoing recitals are true and correct.
2. The Lassen County Planning Commission finds as follows:
  - a. The proposed project is consistent with Lassen County Code, Section 9.60.120 Interim Management Plan.
  - b. The proposed Interim Management Plan #1997-4 will be in effect for no more than five years and address the requirements of Public Resources Code 2770(h).

RESOLUTION 7-03-12

3. The Planning Commission hereby concurs with the Environmental Review Officer that the proposed Interim Management Plan is not subject to the California Environmental Quality Act (CEQA) as it is not considered a "project" as defined by Division 13, Section 21000 of the guidelines.
4. The Planning Commission hereby approves Interim Management Plan #1997-4, Bureau of Land Management and California Department of Transportation.

PASSED AND ADOPTED at a regular meeting of the Planning Commission of the County of Lassen, State of California, on the 5<sup>th</sup> day of July 2012, by the following vote:

AYES: Purdy, Mudrich, Herman


NOES: Solomon, Albaugh

ABSTAIN: None

ABSENT: None

  
\_\_\_\_\_  
Chairman  
Lassen County Planning Commission

ATTEST:

  
\_\_\_\_\_  
Maurice L. Anderson, Secretary  
Lassen County Planning Commission



RESOLUTION NO. 7-03-17

RESOLUTION OF THE LASSEN COUNTY PLANNING COMMISSION APPROVING EXTENSION TO INTERIM MANAGEMENT PLAN #1997-4, CA DEPARTMENT OF TRANSPORTATION, FOR APPROVED RECLAMATION PLAN #1997-4.

WHEREAS, the Planning Commission of Lassen County, after due notice has considered on July 5, 2017 the extension to approved Interim Management Plan #1997-4, California Department of Transportation, to allow for a continued temporary plan of mining operations to be in effect during idle production periods. The proposed extension to the Interim Management Plan is to be in effect for no more than five years and must address the requirements of Public Resources Code 2770(h). The existing mining operation is located approximately 300 feet east of Highway 395 and 70 miles northeast of Susanville, CA via Highway 395. A.P.N.: 119-110-07; and

WHEREAS, the Planning Commission of Lassen County is responsible for the consideration and approval of the proposed extension to approved Interim Management Plan #1997-4 (which was a minor amendment to the approved Reclamation Plan #1997-4 and was approved by resolution #7-03-12); and

WHEREAS, the Environmental Review Officer of the County of Lassen has determined that Interim Management Plans, and therefore extensions to Interim Management Plans, are not subject to the California Environmental Quality Act (CEQA) as they are not considered a “project” as defined by Section 15378 of the Guidelines and SMARA Section 2770(h)(1).

NOW, THEREFORE, BE IT RESOLVED AS FOLLOWS:

1. The foregoing recitals are true and correct.
2. The Lassen County Planning Commission finds as follows:
  - a. The proposed extension to Interim Management Plan #1997-4 is consistent with Lassen County Code, Section 9.60.120 Interim Management Plans (d).
  - b. The proposed extension to Interim Management Plan #1997-4 will be in effect for no more than five years from the date of its approval and will address the requirements of Public Resources Code, Section 2770(h).
  - c. The proposed extension to Interim Management Plan #1997-4 shall be considered void should the associated Bureau of Land Management Permit expire or be revoked, regardless of the status of the approved Interim Management Plan.

3. The Planning Commission hereby concurs with the Environmental Review Officer that the Interim Management Plan, and therefore the extension to that Interim Management Plan, is not subject to the California Environmental Quality Act (CEQA) as it is not considered a "project" as defined by Section 15378 of the Guidelines and SMARA Section 2770(h)(1).
4. The Planning Commission hereby approves the extension to Interim Management Plan #1997-4, California Department of Transportation.

PASSED AND ADOPTED at the regular meeting of the Planning Commission of the County of Lassen, State of California, on the 5<sup>th</sup> day of July, 2017, by the following vote:

AYES: Commissioners Solomon, Herman, Meyer and Purdy

NOES: None

ABSTAIN: None

ABSENT: None



Chairman  
Lassen County Planning Commission

ATTEST:



Maurice L. Anderson, Secretary  
Lassen County Planning Commission

RESOLUTION NO. \_\_\_\_\_

RESOLUTION OF THE LASSEN COUNTY PLANNING COMMISSION APPROVING EXTENSION TO INTERIM MANAGEMENT PLAN #1997-4, CA DEPARTMENT OF TRANSPORTATION, FOR APPROVED RECLAMATION PLAN #1997-4.

WHEREAS, the Planning Commission of Lassen County, after due notice has considered on September 6, 2022 the extension to approved Interim Management Plan #1997-4, California Department of Transportation, to allow for a continued temporary plan of mining operations to be in effect during idle production periods. The proposed extension to the Interim Management Plan is to be in effect for no more than five years and must address the requirements of Public Resources Code 2770(h). The existing mining operation is located approximately 300 feet east of Highway 395 and 70 miles northeast of Susanville, CA via Highway 395. A.P.N.: 119-110-007; and

WHEREAS, the Planning Commission of Lassen County is responsible for the consideration and approval of the proposed extension to approved Interim Management Plan #1997-4 (which was a minor amendment to the approved Reclamation Plan #1997-4 and was approved by resolution #7-03-12); and

WHEREAS, the Planning Commission considered and approved on July 5, 2017 an extension to Interim Management Plan #1997-4 (Resolution No. 7-03-17), California Department of Transportation; and

WHEREAS, the Environmental Review Officer of the County of Lassen has determined that Interim Management Plans, and therefore extensions to Interim Management Plans, are not subject to the California Environmental Quality Act (CEQA) as they are not considered a “project” as defined by Section 15378 of the Guidelines and Public Resources Code (PRC) Section 2770(h)(1).

NOW, THEREFORE, BE IT RESOVED AS FOLLOWS:

1. The foregoing recitals are true and correct.
2. The Lassen County Planning Commission finds as follows:
  - a. The proposed extension to Interim Management Plan #1997-4 is consistent with Lassen County Code, Section 9.60.120 Interim Management Plans (d).
  - b. The proposed extension to Interim Management Plan #1997-4 will be in effect for no more than five years from the date of its approval and will address the requirements of Public Resources Code, Section 2770(h).



RESOLUTION NO. \_\_\_\_\_

- c. The proposed extension to Interim Management Plan #1997-4 shall be considered void should the associated Bureau of Land Management Permit expire or be revoked, regardless of the status of the approved Interim Management Plan.
3. The Planning Commission hereby concurs with the Environmental Review Officer that the Interim Management Plan, and therefore the extension to that Interim Management Plan, is not subject to the California Environmental Quality Act (CEQA) as it is not considered a “project” as defined by Section 15378 of the Guidelines and SMARA Section 2770(h)(1).
4. The Planning Commission hereby approves the extension to Interim Management Plan #1997-4, California Department of Transportation.

PASSED AND ADOPTED at the regular meeting of the Planning Commission of the County of Lassen, State of California, on the 6<sup>th</sup> day of September, 2022, by the following vote:

AYES: \_\_\_\_\_

NOES: \_\_\_\_\_

ABSTAIN: \_\_\_\_\_

ABSENT: \_\_\_\_\_

\_\_\_\_\_  
Chairman  
Lassen County Planning Commission

ATTEST:

\_\_\_\_\_  
Maurice L. Anderson, Secretary  
Lassen County Planning Commission