

PUBLIC MEETING

BIG VALLEY GROUNDWATER BASIN ADVISORY COMMITTEE WEDNESDAY, August 26, 2020 at 4:00 P.M.

Veterans Memorial Hall, 657-575 Bridge Street, Bieber, CA 96009
[Public participation offered in person and via webinar or conference call.

Join the ZoomGov Meeting at:

<https://www.zoomgov.com/j/1608393803?pwd=NUhCY2tNMzgvS1hKeGNmSUc1UGxCdz09>,

Meeting ID: 160 839 3803 OR call in (listen-only-mode) at (833) 568-8864 US Toll-Free]

What is the Big Valley Groundwater Basin Advisory Committee (BVAC)?

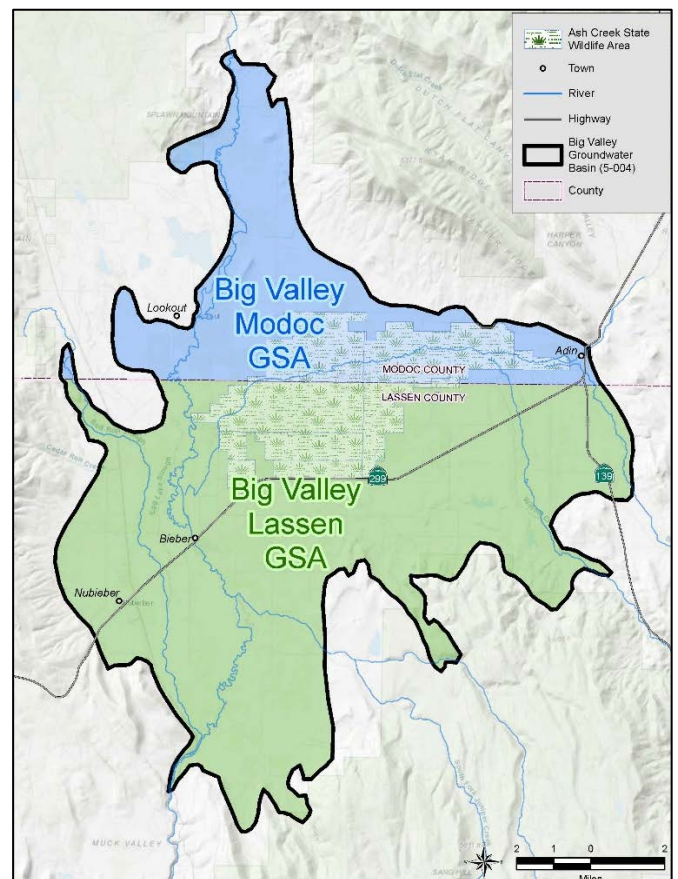
The BVAC is the committee formed through a memorandum of understanding to advise the Lassen and Modoc Groundwater Sustainability Agencies (GSAs) during development of the Groundwater Sustainability Plan (GSP).

What is a Groundwater Sustainability Plan?

A GSP is a planning document required by the Sustainable Groundwater Management Act (SGMA), a set of laws passed in 2014. A GSP is a detailed plan for how a groundwater basin will reach long-term sustainability. It establishes a groundwater budget, minimum thresholds, and management actions to achieve sustainability.

Who is developing the GSP in Big Valley?

Lassen and Modoc Counties have agreed to serve as the GSAs for their respective portions of the Big Valley Groundwater Basin (BVGB) shown on the map to the right. The GSAs have agreed to work collaboratively to develop a single GSP for the entire BVGB as required by SGMA. The BVAC has been established by the GSAs to help guide the process. All BVAC meetings will be open to the public and public comment on GSP development will be heard at each BVAC meeting. Public comment received prior to each meeting will also be provided to the BVAC members.



Big Valley Groundwater Basin

If you would like more information or want to be included on the interested parties list for the Big Valley Basin, please visit the GSP website or contact the GSAs directly at the phone numbers listed below.

GSP Website: <https://bigvalleygsp.org/>

Lassen County – (530) 251-8269

Modoc County – (530) 233-6201