

PUBLIC MEETING

BIG VALLEY GROUNDWATER BASIN ADVISORY COMMITTEE WEDNESDAY, MAY 5, 2021 at 2:00 P.M.

Veterans Memorial Hall, 657-575 Bridge Street, Bieber, CA 96009
[Public participation offered in person and via webinar or conference call.

Join the ZoomGov Meeting at:

<https://www.zoomgov.com/j/1604142645?pwd=MVVycGJJZjFmMGtvRFE1ZkVsTWtWUT09>,

Meeting ID: 160 414 2645, Passcode: 915732

OR call in (listen-only-mode) at (833) 568-8864 US Toll-Free]

At the May 5, 2021, meeting, we will introduce a summary brochure for GSP Chapters 1-6, review revisions made to GSP Chapter 7 *Sustainable Management Criteria*, continue discussion on GSP Chapter 8 *Monitoring Networks*, and begin discussion on SGMA implementation in preparation for GSP Chapter 10 *Implementation Plan*.

What is the Big Valley Groundwater Basin Advisory Committee (BVAC)?

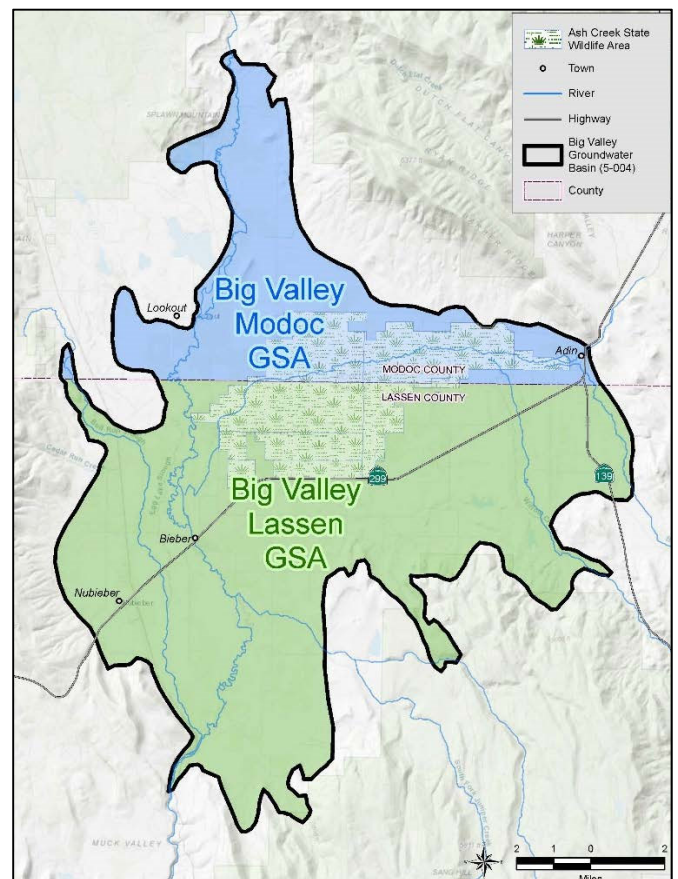
The BVAC is the committee formed to advise the Lassen and Modoc Groundwater Sustainability Agencies (GSAs) during development of the Groundwater Sustainability Plan (GSP).

What is a Groundwater Sustainability Plan?

A GSP is a detailed planning document, required by the Sustainable Groundwater Management Act (SGMA), that establishes a groundwater budget, minimum thresholds, and management actions to achieve long-term sustainability.

Who is developing the GSP in Big Valley?

Lassen and Modoc Counties have agreed to serve as the GSAs and work collaboratively to develop a single GSP for the entire Big Valley Groundwater Basin (BVGB). The BVAC has been established to help guide the process and all BVAC meetings will be open to the public and public comment is encouraged.



Big Valley Groundwater Basin

If you would like more information or want to be included on the interested parties list for the Big Valley Basin, please visit the GSP website or contact the GSAs directly at the phone numbers listed below.

GSP Website: <https://bigvalleygsp.org/>

Lassen County – (530) 251-8269

Modoc County – (530) 233-6201